

REVIVE YOUR RIDE

SNOWMOBILE TRACKS



camoplast

HI-PERFORMANCE TRACKS



SIZE IT UP

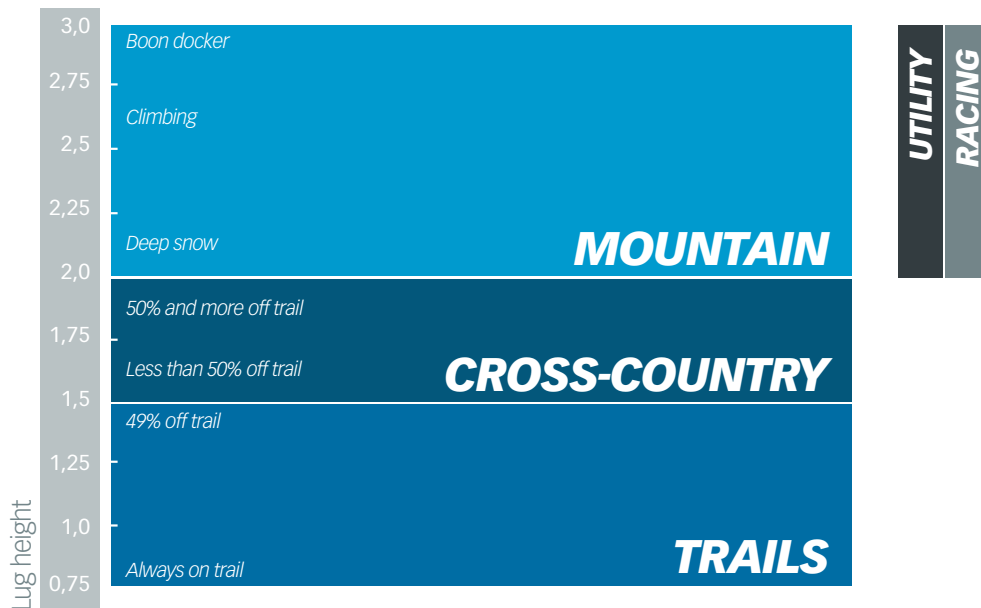
There are four critical dimensions to a snowmobile track: length, width, drive pitch, and lug height. You need to know all of them for your sled to select the correct replacement track to revive your ride.

- 1 Length**
The length is the inside circumference of the track, and is calculated as the drive pitch (see below) times the number of track segments. It must be correct to the nearest inch for proper fit without additional modifications to the skid frame. (Aftermarket parts are available for these modifications if needed.) In general, shorter tracks provide better handling while longer tracks provide better ride quality and better floatation.
- 2 Width**
Maximum track width is governed by the width of the tunnel. You can choose a replacement track that is slightly narrower, like a 15-inch track in place of a 16-inch track, but not necessarily the other way around. A narrower track will reduce weight for better acceleration and top speed, while a wider track will provide better floatation in soft, deep snow.
- 3 Drive Pitch**
The pitch is the drive cog center distance around the circumference of the cogs on the drive axle. It must match the existing track or the drive cogs must be changed. The most common pitch is 2.52-inches because it provides good all-around performance, but many new sleds use a 2.86-inch pitch because the weight reduction improves performance. A 3.0-inch pitch is also common on mountain sleds for additional weight reduction. Some other drive pitches are also found on older models.
- 4 Lug Height**
In basic terms, more lug height equals better traction. Even one quarter of an inch in extra height can make a substantial difference in acceleration and braking. And newer lug designs can improve side bite and reduce fishtailing for better stability. Check for adequate clearance before going to a taller lug track.

LUG HEIGHT, THE KEY TO PERFORMANCE

Understanding the trade-offs of lug design, particularly lug height, is key to selecting the correct track to revive your ride. A lug is an oar that pushes on the snow to move the machine forward, and is also often used to control sideways movement and overall stability. More aggressive tall lugs provide a better bite in soft or loose snow for better acceleration and braking, but the added weight and aerodynamic losses can degrade top speed.

Recommended lug height by user segment



ICE TECHNOLOGY TRACKS

When it comes to traction and control on icy surfaces, nothing beats the ability to bite and grip like metal track studs. Only Camoplast ICE Technology tracks are pre-studded at the factory to eliminate costly, tedious, and time consuming stud installation. Our proprietary “sharp tip” lug studs offer comparable performance to conventional track studs with considerable advantages including big weight savings because they add less than one pound to the weight of the track.

Performance

- Reduce stopping distances on ice and hard pack snow
- Reduce track spin on icy hills
- Reduce track side slip for better control in icy corners
- Improve acceleration on ice and hard pack snow
- Improve gas mileage over push through studded track

Convenience

- Eliminates stud installation time and trouble
- No maintenance required

Economy

- Costs less than a standard track with conventional studs
- No stud installation or maintenance costs



Camoplast tracks equipped with ICE TECH technology



CONVENTIONAL TRACK STUDDING

For those who prefer traditional methods to gain all the advantages of a studded track, Camoplast offers our pre-holed TRACKtion Control System™ models for a variety of trail sled applications.

Produced specifically for use with conventional track studs, Camoplast TRACKtion Control System tracks feature enhanced internal belting for added durability. Stud holes are factory punched to insure that the fabric and reinforcing cords remain correctly positioned during the track manufacturing process to insure consistency and quality. The proven stud patterns were developed by one of the most experienced traction manufacturers in the industry and provide many individual scratch lines for the best possible bite. Instructions on proper stud and washer selection (including part numbers) and correct installation procedures are included with the track.

Convenience

- No drilling needed allows quicker and easier stud installation

Durability

- Track belting enhanced and properly punched for studding

Effectiveness

- Precise hole layout insures maximum traction

And unlike other conventionally studded tracks, Camoplast TRACKtion Control System tracks are covered by a one-year limited warranty from Camoplast, with the studs and related hardware covered by the stud manufacturer's warranty protection.



Pre-holed
TRACKtion
Control
System™

 **Camoplast tracks equipped with
TRACKtion Control technology**



NEW ICE ATTAK XT

This newest member of the Ice Control Enhancement Technology (ICE Tech) series is engineered with an optimized rubber compound and raises the bar for pre-studded track performance.

- Factory pre-studded for improved traction and confidence
- New lug design delivers better traction than the Ice Ripper XT
- 1.22" lug height means better handling and stability over lower lug height tracks
- Optimized rubber compound increases lug rigidity for super traction on groomed trails



MODEL	DIMENSIONS	LUG HEIGHT	WEIGHT	DRIVE PITCH	CLIP CONFIG.
9190H	15" x 120" (38 cm x 305 cm)	1.22" (31 mm)	37 lbs (17 kg)	2.86" (73 mm)	Full
9191H	15" x 137" (38 cm x 348 cm)	1.22" (31 mm)	42 lbs (19 kg)	2.86" (73 mm)	Full
9200H	15" x 121" (38 cm x 307 cm)	1.22" (31 mm)	40 lbs (18 kg)	2.52" (64 mm)	Full
9201H	15" x 128" (38 cm x 325 cm)	1.22" (31 mm)	42 lbs (19 kg)	2.52" (64 mm)	Full
9202H	15" x 136" (38 cm x 345 cm)	1.22" (31 mm)	45 lbs (20 kg)	2.52" (64 mm)	Full
9203H	15" x 144" (38 cm x 365 cm)	1.22" (31 mm)	47 lbs (21 kg)	2.52" (64 mm)	Full





NEW ICE ATTAK XT

ICE ATTAK

- Factory pre-studded for improved traction and confidence
- HackSaw-derivative lug design for good top speed and handling on hard-packed snow
- Stud pattern features 31 separate traction points
- 1.06" lug height for average trail and good speed
- 1.375" lug height for on and off-trail applications



MODEL	DIMENSIONS	LUG HEIGHT	WEIGHT	DRIVE PITCH	CLIP CONFIG.
9028H	15" x 121" (38 cm x 307 cm)	1.063" (27 mm)	38 lbs (17 kg)	2.52" (64 mm)	Full
9029H	15" x 136" (38 cm x 345 cm)	1.063" (27 mm)	43 lbs (20 kg)	2.52" (64 mm)	Full
9037H	15" x 128" (38 cm x 325 cm)	1.063" (27 mm)	40 lbs (18 kg)	2.52" (64 mm)	Full
9106H	15" x 144" (38 cm x 366 cm)	1.063" (27 mm)	45 lbs (20 kg)	2.52" (64 mm)	Full
9134H	16" x 137" (38 cm x 348 cm)	1.375" (35 mm)	47 lbs (21 kg)	2.86" (73 mm)	Full
9136H	15" x 120" (38 cm x 305 cm)	1.375" (35 mm)	41 lbs (19 kg)	2.86" (73 mm)	Full
9138H	15" x 146" (38 cm x 371 cm)	1.375" (35 mm)	50 lbs (23 kg)	2.86" (73 mm)	Full



ICE RIPPER XT

- Factory pre-studded for improved traction and confidence
- Ripsaw-derivative attack angled lugs provide excellent forward and lateral bite
- 1.25" lug height means better on-trail traction, handling and stability over lower lug height tracks
- "Chopped" lug design for excellent grip performance on hard-groomed trails



MODEL	DIMENSIONS	LUG HEIGHT	WEIGHT	DRIVE PITCH	CLIP CONFIG.
9077H	15" x 121" (38 cm x 307 cm)	1.25" (32 mm)	39 lbs (18 kg)	2.52" (64 mm)	Full
9078H	15" x 128" (38 cm x 325 cm)	1.25" (32 mm)	42 lbs (19 kg)	2.52" (64 mm)	Full
9079H	15" x 136" (38 cm x 345 cm)	1.25" (32 mm)	44 lbs (20 kg)	2.52" (64 mm)	Full
9164H	15" x 120" (38 cm x 305 cm)	1.25" (32 mm)	36 lbs (16 kg)	2.86" (73 mm)	Full
9173H	15" x 144" (38 cm x 366 cm)	1.25" (32 mm)	46 lbs (21 kg)	2.52" (64 mm)	Full
9191H	15" x 137" (38 cm x 348 cm)	1.22" (31 mm)	TBA	2.86" (73 mm)	Full



NEW RIPS AW II

- New lug design combines the best features of Ripsaw, Cobra and Predator for excellent performance on a wide variety of trail conditions
- Less side bite through the corners than the original RipSaw
- Less track noise for quieter operation on hard-packed groomed trails
- 1" lug height for good top speed
- 1.25" lug height for better traction, handling and stability



MODEL	DIMENSIONS	LUG HEIGHT	WEIGHT	DRIVE PITCH	CLIP CONFIG.
9156H	15" x 120" (38 cm x 305 cm)	1.25" (32 mm)	36 lbs (16 kg)	2.86" (73 mm)	Full
9158H	15" x 120" (38 cm x 305 cm)	1" (25 mm)	32 lbs (15 kg)	2.86" (73 mm)	Full
9189R	15" x 129" (38 cm x 323 cm)	1.75" (44 mm)	TBA	2.86" (73 mm)	Full
9214H	15" x 121" (38 cm x 307 cm)	1.25" (32 mm)	TBA	2.52" (64 mm)	Full
9215H	15" x 129" (38 cm x 323 cm)	1.25" (32 mm)	TBA	2.52" (64 mm)	Full
9216H	15" x 136" (38 cm x 345 cm)	1.25" (32 mm)	TBA	2.52" (64 mm)	Full
9217H	15" x 144" (38 cm x 366 cm)	1.25" (32 mm)	TBA	2.52" (64 mm)	Full



NEW RIPSAW II

RIPSAW

- Aggressive angled profiles for outstanding forward and lateral bite on groomed trails
- “Chopped” lug design means superior handling, acceleration and braking on hard-packed groomed trails
- Narrow lug base means less rolling resistance for maximum top speed
- Rigid lugs provide excellent durability and longevity for miles and miles of use

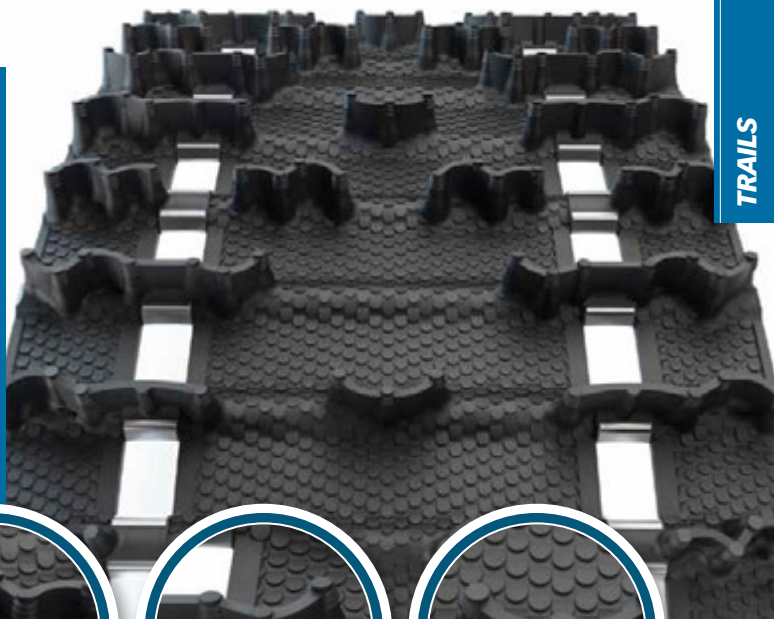


MODEL	DIMENSIONS	LUG HEIGHT	WEIGHT	DRIVE PITCH	CLIP CONFIG.
9001H	13.5" x 128" (34 cm x 325 cm)	1.25" (32 mm)	34 lbs (15 kg)	2.52" (64 mm)	Every 3 rd / closed windows
9040H	15" x 128" (38 cm x 325 cm)	1.25" (32 mm)	41 lbs (19 kg)	2.52" (64 mm)	Full
9146H	15" x 121" (38 cm x 307 cm)	1.25" (32 mm)	35 lbs (16 kg)	2.52" (64 mm)	Every 3 rd / open windows
9148H	15" x 120" (38 cm x 305 cm)	1" (25 mm)	32 lbs (15 kg)	2.86" (73 mm)	Full
9149H	15" x 120" (38 cm x 305 cm)	1.25" (32 mm)	34 lbs (15 kg)	2.86" (73 mm)	Full
9968H	15" x 121" (38 cm x 307 cm)	1.25" (32 mm)	38 lbs (17 kg)	2.52" (64 mm)	Full
9968H144	15" x 121" (38 cm x 307 cm)	1.25" (32 mm)	38 lbs (17 kg)	2.52" (64 mm)	Full
9969H	15" x 136" (38 cm x 345 cm)	1.25" (32 mm)	TBA	2.52" (64 mm)	Full
9969H162	15" x 136" (38 cm x 345 cm)	1.25" (32 mm)	TBA	2.52" (64 mm)	Full



COBRA

- Cupped lugs for superior handling, acceleration and braking in soft loose snow trails
- Flexible lug design means excellent off-trail performance without sacrificing top speed
- Reduced track noise
- Unique traction teeth for extra grip on hard-packed snow surfaces



TRAILS



MODEL	DIMENSIONS	LUG HEIGHT	WEIGHT	DRIVE PITCH	CLIP CONFIG.
9052H	15" x 121" (38 cm x 307 cm)	1.352" (34 mm)	37 lbs (17 kg)	2.52" (64 mm)	Full
9061H	15" x 136" (38 cm x 345 cm)	1.352" (34 mm)	42 lbs (19 kg)	2.52" (64 mm)	Full
9081H	15" x 128" (38 cm x 325 cm)	1.352" (34 mm)	40 lbs (18 kg)	2.52" (64 mm)	Full
9092H	15" x 120" (38 cm x 305 cm)	1.352" (34 mm)	33 lbs (15 kg)	2.86" (73 mm)	Full
9107H	15" x 144" (38 cm x 366 cm)	1.352" (34 mm)	44 lbs (20 kg)	2.52" (64 mm)	Full
9114H	16" x 137" (41 cm x 348 cm)	1.352" (34 mm)	40 lbs (18 kg)	2.86" (73 mm)	Full
9120H	15" x 146" (38 cm x 371 cm)	1.352" (34 mm)	40 lbs (18 kg)	2.86" (73 mm)	Full

HACKSAW

- Crescent lug design with recessed tips and cutting edges for good forward and lateral bite on hard-packed groomed trails
- Rigid lugs offer excellent durability and longevity for miles and miles of use
- Narrow lug base means less rolling resistance for maximum top speed
- 1" lug height for low rolling resistance that improves fuel economy



MODEL	DIMENSIONS	LUG HEIGHT	WEIGHT	DRIVE PITCH	CLIP CONFIG.
9009H	15" x 121" (38 cm x 307 cm)	1" (25 mm)	33 lbs (17 kg)	2.52" (64 mm)	Every 3 rd / open windows
9010H	15" x 136" (38 cm x 345 cm)	1" (25 mm)	38 lbs (17 kg)	2.52" (64 mm)	Full
9027H	14" x 121" (36 cm x 307 cm)	1" (25 mm)	32 lbs (17 kg)	2.52" (64 mm)	Full
9043H144	15" x 121" (38 cm x 307 cm)	1" (25 mm)	36 lbs (17 kg)	2.52" (64 mm)	Full
9110H	14" x 128" (36 cm x 325 cm)	1" (25 mm)	34 lbs (17 kg)	2.52" (64 mm)	Full
9147H	15" x 121" (38 cm x 307 cm)	1" (25 mm)	32 lbs (17 kg)	2.52" (64 mm)	Every 3 rd / open windows
9960H	13.5" x 128" (34 cm x 325 cm)	1" (25 mm)	31 lbs (17 kg)	2.52" (64 mm)	Every 3 rd / closed windows



ENERGY

- Economical general replacement track
- Lightweight design provides good fuel economy and low rolling resistance



TRAILS



MODEL	DIMENSIONS	LUG HEIGHT	WEIGHT	DRIVE PITCH	CLIP CONFIG.
9793T	15" x 121" (38 cm x 307 cm)	1" (25 mm)	32 lbs (15 kg)	2.52" (64 mm)	Every 3 rd / closed windows
9793T144	15" x 121" (38 cm x 307 cm)	1" (25 mm)	32 lbs (15 kg)	2.52" (64 mm)	Every 3 rd / closed windows
9794T	15" x 136" (38 cm x 345 cm)	1" (25 mm)	36 lbs (16 kg)	2.52" (64 mm)	Every 3 rd / closed windows

FAR BEHIND

CROSS-COUNTRY

CHOOSE THE RIGHT LUG HEIGHT

- 1.5-inch lug for riders doing both trail and off trail exploring
- 1.75-inch lug for more serious back country boondocking

When you ride rough, give your crossover or trail sled a big performance boost with a Camoplast cross-country track.

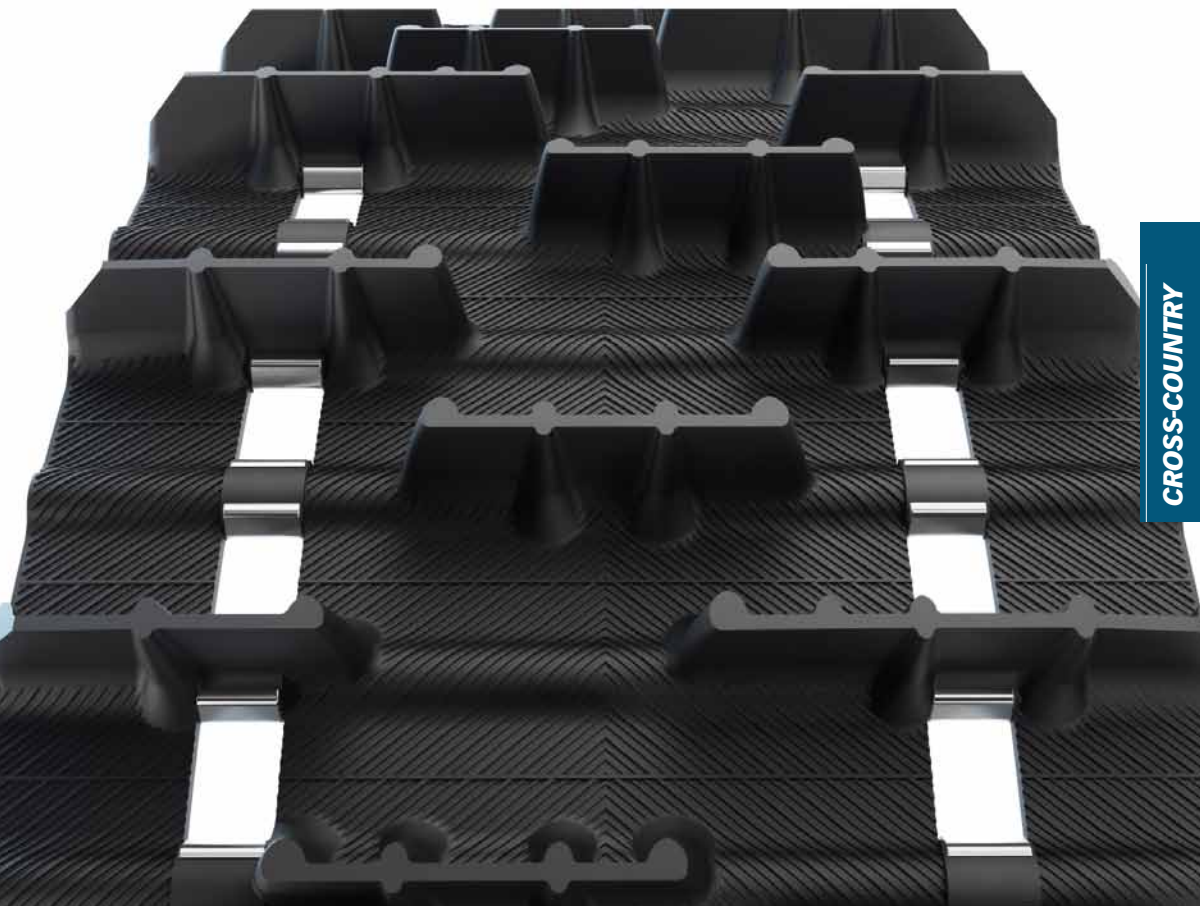
BACKCOUNTRY

- 1.75" lugs provide excellent traction for crossover riders who prefer off-trail riding
- Sno X inspired lug design bites big in deep, soft, untraveled snow
- Rigid lug support columns and optimized rubber compound ideal for off and on-trail performance



MODEL	DIMENSIONS	LUG HEIGHT	WEIGHT	DRIVE PITCH	CLIP CONFIG.
9140C	15" x 121" (38 cm x 307 cm)	1.75" (44 mm)	40 lbs (18 kg)	2.52" (64 mm)	Full
9141C	15" x 128" (38 cm x 325 cm)	1.75" (44 mm)	42 lbs (19 kg)	2.52" (64 mm)	Full
9142C	15" x 136" (38 cm x 345 cm)	1.75" (44 mm)	44 lbs (20 kg)	2.52" (64 mm)	Full
9143C	15" x 144" (38 cm x 366 cm)	1.75" (44 mm)	46 lbs (21 kg)	2.52" (64 mm)	Full





CROSS-COUNTRY

BACKCOUNTRY

XC PRO

- 1.75" lugs provide excellent traction for crossover riders who prefer off-trail riding
- Sno X inspired lug design bites big in deep, soft, untraveled snow
- Cupped lugs for superior handling, acceleration and braking in soft loose snow trails
- Angled lugs provide forward and lateral bite on hard and groomed surfaces



MODEL	DIMENSIONS	LUG HEIGHT	WEIGHT	DRIVE PITCH	CLIP CONFIG.
9139C	15" x 120" (38 cm x 305 cm)	1.75" (44 mm)	42 lbs (19 kg)	2.86" (73 mm)	Full
9170C	15" x 146" (38 cm x 371 cm)	1.75" (44 mm)	51 lbs (23 kg)	2.86" (73 mm)	Full





XC PRO

INTENSE

- 1.5" lugs provide aggressive traction for crossover riders who prefer on-trail riding
- Saw-tooth lug design for excellent handling, acceleration and braking on groomed hard-packed trails
- V-shaped and full lugs provide extra traction in soft, loose snow



MODEL	DIMENSIONS	LUG HEIGHT	WEIGHT	DRIVE PITCH	CLIP CONFIG.
9108C	15" x 136" (38 cm x 345 cm)	1.5" (38 mm)	41 lbs (19 kg)	2.52" (64 mm)	Full
9930C	15" x 121" (38 cm x 307 cm)	1.5" (38 mm)	39 lbs (18 kg)	2.52" (64 mm)	Full

CROSSOVER

- 1.5" lugs provide aggressive traction for crossover riders who prefer on-trail riding
- Longer lengths – 144", 151" and 159" — allow conversion of mountain designed snowmobiles to crossover sleds for on and off-trail use
- Aggressive angled lugs offer outstanding forward and lateral bite on groomed trails
- "Stepped" lug design allows lug flex for improved traction in soft, loose snow



CROSS-COUNTRY



MODEL	DIMENSIONS	LUG HEIGHT	WEIGHT	DRIVE PITCH	CLIP CONFIG.
9003C	15" x 144" (38 cm x 366 cm)	1.5" (38 mm)	50 lbs (23 kg)	2.52" (64 mm)	Full
9004C	15" x 151" (38 cm x 384 cm)	1.5" (38 mm)	52 lbs (24 kg)	2.52" (64 mm)	Full
9005C	15" x 159" (38 cm x 404 cm)	1.5" (38 mm)	51 lbs (23 kg)	2.52" (64 mm)	Every 3 rd / open windows

RIPSAW 1.5

- 1.5" lugs provide aggressive traction for crossover riders who prefer on-trail riding
- Aggressive angled lugs offer outstanding forward and lateral bite on groomed trails
- "Chopped" lug design for superior handling, acceleration and braking on groomed hard-packed trails
- Rigid lugs deliver excellent durability and longevity for miles and miles of riding



MODEL	DIMENSIONS	LUG HEIGHT	WEIGHT	DRIVE PITCH	CLIP CONFIG.
9045C	15" x 128" (38 cm x 325 cm)	1.5" (38 mm)	40 lbs (18 kg)	2.52" (64 mm)	Every 3 rd / open windows
9076C	15" x 137" (38 cm x 348 cm)	1.5" (38 mm)	42 lbs (19 kg)	2.86" (73 mm)	Full
9112C	15" x 121" (38 cm x 307 cm)	1.5" (38 mm)	41 lbs (19 kg)	2.52" (64 mm)	Full
9113C	15" x 136" (38 cm x 345 cm)	1.5" (38 mm)	46 lbs (21 kg)	2.52" (64 mm)	Full
9159C	15" x 120" (38 cm x 305 cm)	1.5" (38 mm)	37 lbs (17 kg)	2.86" (73 mm)	Full
9172C	15" x 146" (38 cm x 371 cm)	1.5" (38 mm)	45 lbs (20 kg)	2.86" (73 mm)	Full



FREERIDE

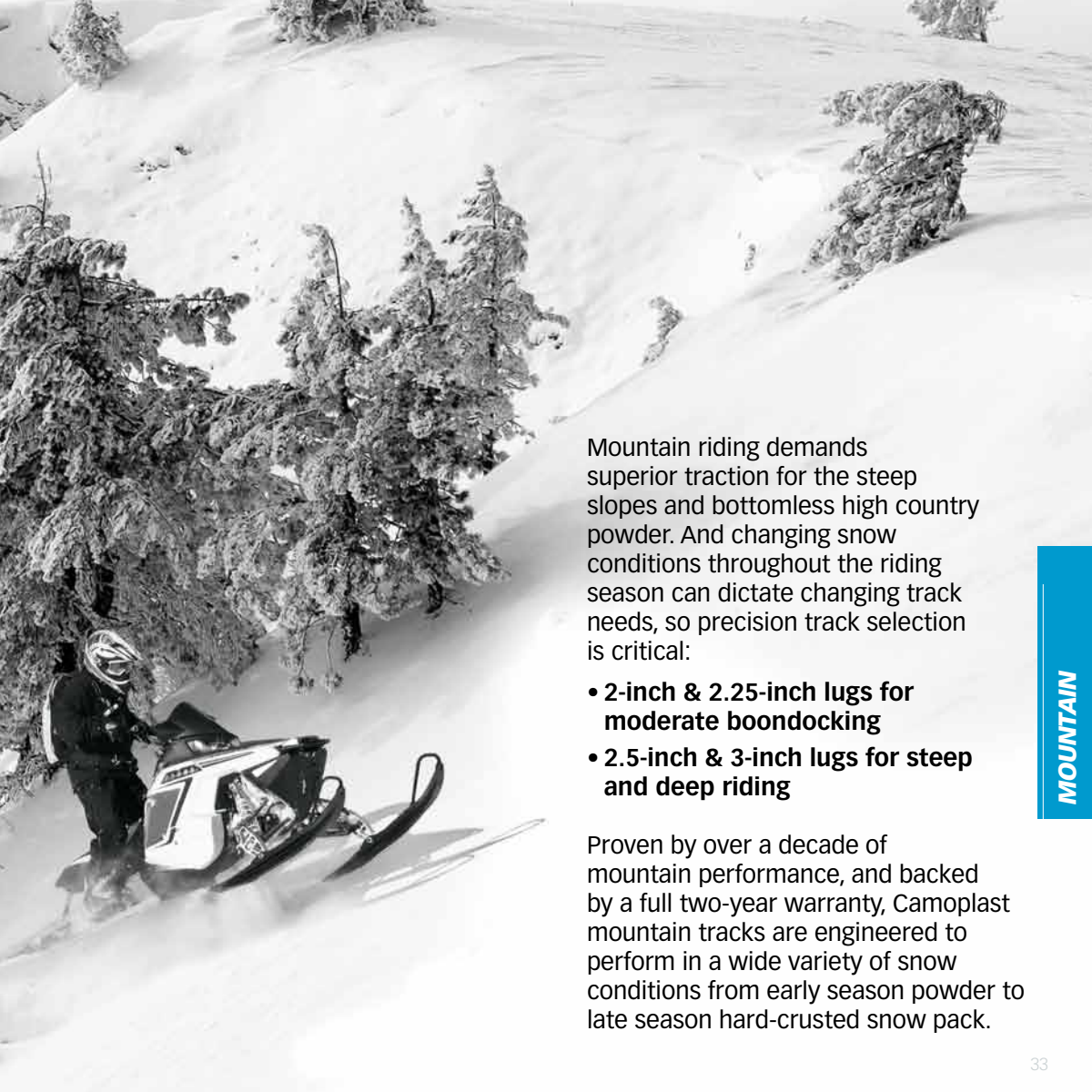
- 1.5" lugs provide aggressive traction for crossover riders who prefer on-trail riding
- 14" width allows fitment for MY07-12 Yamaha Phazer FX, GT & RTX
- Full lugs on outside edges provide excellent traction in soft, loose snow
- Finger designed lugs at track center offer improved traction on groomed, hard-packed snow



CROSS-COUNTRY



MODEL	DIMENSIONS	LUG HEIGHT	WEIGHT	DRIVE PITCH	CLIP CONFIG.
9033C	14" x 121" (36 cm x 307 cm)	1.5" (38 mm)	38 lbs (17 kg)	2.52" (64 mm)	Full



Mountain riding demands superior traction for the steep slopes and bottomless high country powder. And changing snow conditions throughout the riding season can dictate changing track needs, so precision track selection is critical:

- **2-inch & 2.25-inch lugs for moderate boondocking**
- **2.5-inch & 3-inch lugs for steep and deep riding**

Proven by over a decade of mountain performance, and backed by a full two-year warranty, Camoplast mountain tracks are engineered to perform in a wide variety of snow conditions from early season powder to late season hard-crusting snow pack.

NEW PEAK 2.5

Alternating staggered and cupped 2.5-inch tall lugs, our radical new PEAK 2.5 sets a new standard for deep snow tracks, surpassing even the 2.5-inch Camoplast Challenger Extreme and many proprietary tracks on snowmobile brands.

- 2.5" lug height for traction in bottomless powder and high peak climbing
- Enormous angular lugs bite big and funnel snow under the snowmobile for outstanding floatation
- Rigid lug support columns are optimized for soft and hard-packed snow
- Stiff outer lug bars deliver better lateral control for improved handling



MODEL	DIMENSIONS	LUG HEIGHT	WEIGHT	DRIVE PITCH	CLIP CONFIG.
9177M	16" x 163" (41 cm x 414 cm)	2.5" (64 mm)	63 lbs (29 kg)	2.86" (73 mm)	Full
9178M	16" x 154" (41 cm x 392 cm)	2.5" (64 mm)	60 lbs (27 kg)	2.86" (73 mm)	Full
9179M	16" x 146" (41 cm x 371 cm)	2.5" (64 mm)	56 lbs (25 kg)	2.86" (73 mm)	Full
9180M	15" x 163" (38 cm x 414 cm)	2.5" (64 mm)	59 lbs (27 kg)	2.86" (73 mm)	Full
9181M	15" x 154" (38 cm x 392 cm)	2.5" (64 mm)	56 lbs (25 kg)	2.86" (73 mm)	Full
9182M	15" x 146" (38 cm x 371 cm)	2.5" (64 mm)	53 lbs (24 kg)	2.86" (73 mm)	Full

These tracks models feature center hole for third driver.

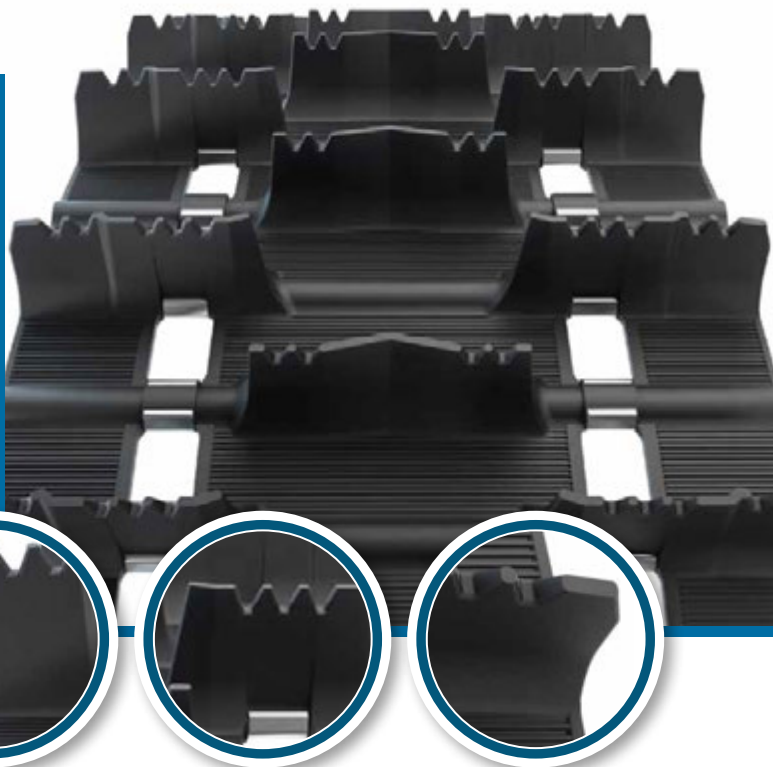


MOUNTAIN

NEW PEAK 2.5

CHALLENGER

- Benchmark Challenger lug design is versatile for all around performance in a wide range of mountain riding conditions
- 2" and 2.313" lugs provide good traction for moderate boondocking and off-trail riding
- Saw-tooth lug feature provides traction and grip on hard, wind-blown and springtime snow

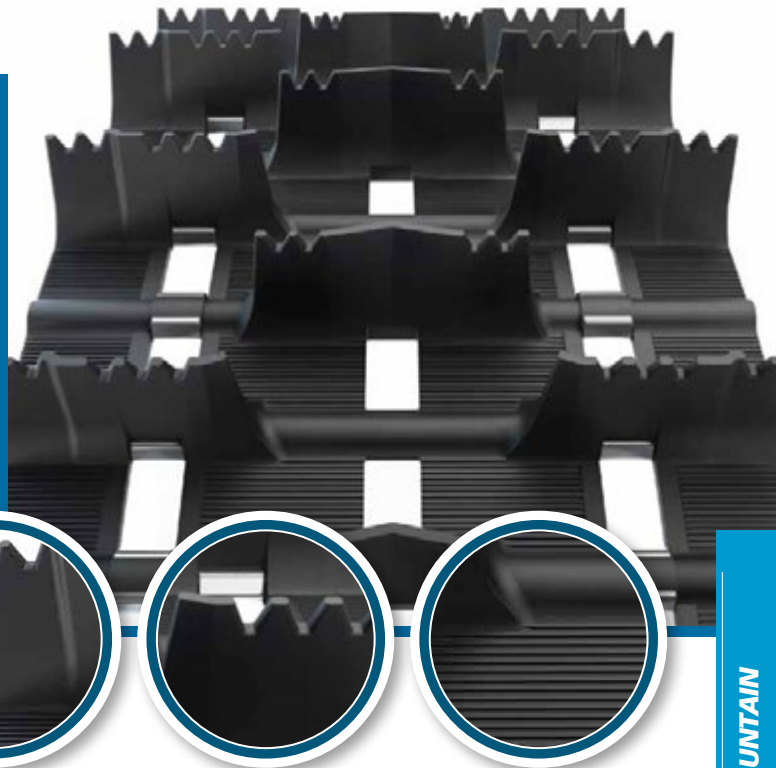


MODEL	DIMENSIONS	LUG HEIGHT	WEIGHT	DRIVE PITCH	CLIP CONFIG.
9064M	16" x 146" (41 cm x 371 cm)	2.313" (59 mm)	49 lbs (22 kg)	2.86" (73 mm)	Full
9065M	16" x 154" (41 cm x 391 cm)	2.313" (59 mm)	53 lbs (24 kg)	2.86" (73 mm)	Full
9066M	16" x 163" (41 cm x 414 cm)	2.313" (59 mm)	57 lbs (26 kg)	2.86" (73 mm)	Full
9186M	16" x 137" (41 cm x 348 cm)	2" (51 mm)	44 lbs (20 kg)	2.86" (73 mm)	Full
9187M	16" x 146" (41 cm x 371 cm)	2" (51 mm)	48 lbs (22 kg)	2.86" (73 mm)	Full
9188M	16" x 154" (41 cm x 391 cm)	2" (51 mm)	51 lbs (23 kg)	2.86" (73 mm)	Full
9204M	16" x 137" (41 cm x 348 cm)	2.313" (59 mm)	46 lbs (21 kg)	2.86" (73 mm)	Full
9797M	15" x 136" (38 cm x 345 cm)	2" (51 mm)	50 lbs (23 kg)	2.52" (64 mm)	Full
9798M	15" x 121" (38 cm x 307 cm)	2" (51 mm)	45 lbs (20 kg)	2.52" (64 mm)	Full



CHALLENGER EXTREME

- Benchmark Challenger lug design
- 2.5" and giant 3" lugs for boondocking the deepest, bottomless powder and climbing the steepest chutes
- Saw-tooth lug feature provides traction and grip on hard, wind-blown and springtime snow
- Optional 174" length is the longest one-piece molded snowmobile track available for ultimate floatation



MODEL	DIMENSIONS	LUG HEIGHT	WEIGHT	DRIVE PITCH	CLIP CONFIG.
9035M	15" x 174" (38 cm x 442 cm)	2.5" (64 mm)	63 lbs (29 kg)	3" (76 mm)	Full
9102M	16" x 154" (41 cm x 391 cm)	2.5" (64 mm)	59 lbs (27 kg)	2.86" (73 mm)	Full
9103M	16" x 163" (41 cm x 414 cm)	2.5" (64 mm)	61 lbs (28 kg)	2.86" (73 mm)	Full
9104M	15" x 154" (38 cm x 391 cm)	2.5" (64 mm)	55 lbs (25 kg)	2.86" (73 mm)	Full
9105M	15" x 163" (38 cm x 414 cm)	2.5" (64 mm)	57 lbs (26 kg)	2.86" (73 mm)	Full
9115M	16" x 174" (41 cm x 442 cm)	3" (76 mm)	75 lbs (34 kg)	3" (76 mm)	Full
9116M	16" x 162" (41 cm x 412 cm)	3" (76 mm)	TBA	3" (76 mm)	Full
9174M	15" x 153" (38 cm x 389 cm)	2.5" (64 mm)	57 lbs (26 kg)	3" (76 mm)	Full
9175M	15" x 162" (38 cm x 412 cm)	2.5" (64 mm)	55 lbs (25 kg)	3" (76 mm)	Full



With big footprints for better

NEW COBRA WT

The Camoplast Cobra WT is a no-compromises solution for off-trail work and play.

- Extra tall 1.5" and 1.8" lugs provide optimal traction on and off-trail applications
- Cupped lugs deliver excellent traction in soft, loose snow and off-trail back country explorations
- Lightweight for improved efficiency and fuel economy
- High-performance belting pulls heavier loads without track stretching



MODEL	DIMENSIONS	LUG HEIGHT	WEIGHT	DRIVE PITCH	CLIP CONFIG.
9195U	20" x 154" (50 cm x 392 cm)	1.8" (46 mm)	65 lbs (29 kg)	2.86" (73 mm)	Full
9196U	20" x 154" (50 cm x 392 cm)	1.5" (38 mm)	62 lbs (28 kg)	2.86" (73 mm)	Full

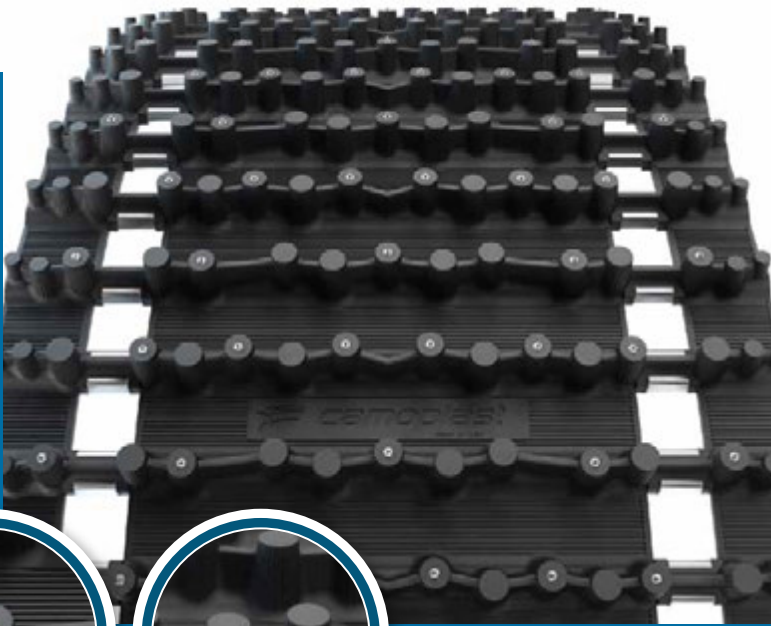




NEW COBRA WT

ICE WIDE TRACK

- Factory pre-studded for improved traction and confidence
- Finger designed lugs deliver superior traction on hard-packed snow



MODEL	DIMENSIONS	LUG HEIGHT	WEIGHT	DRIVE PITCH	CLIP CONFIG.
9008U	20" x 156" (50 cm x 396 cm)	1.25" (32 mm)	72 lbs (33 kg)	2.52" (64 mm)	Full

RIPSAW FULL

- “Full block” lugs provides traction for soft, loose snow
- Aggressive angled lugs for outstanding forward and lateral bite on hard-packed snow
- “Chopped” lug design increases traction and braking on hard-packed snow
- Rigid lugs deliver excellent durability and longevity for miles and miles of use



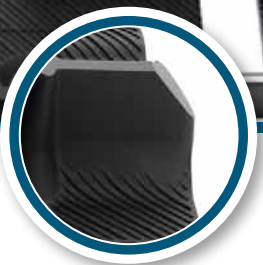
MODEL	DIMENSIONS	LUG HEIGHT	WEIGHT	DRIVE PITCH	CLIP CONFIG.
9002U	20" x 156" (50 cm x 396 cm)	1.25" (32 mm)	68 lbs (31 kg)	2.52" (64 mm)	Full
9089U	20" x 154" (50 cm x 391 cm)	1.375" (35 mm)	66 lbs (30 kg)	2.86" (73 mm)	Full
9151U	20" x 156" (50 cm x 396 cm)	1.25" (32 mm)	68 lbs (31 kg)	2.52" (64 mm)	Full

To fit only on Yamaha utility sled.



SNO X

- 1.75" lugs are the choice of professional racers
- Extra hard outside rubber compound means good bite for the hole shot
- Track designs tested and proven by select OE factory race teams
- ISR approved for use in Mod class



MODEL	DIMENSIONS	LUG HEIGHT	WEIGHT	DRIVE PITCH	CLIP CONFIG.
9067R	15" x 121" (38 cm x 307 cm)	1.75" (44 mm)	41 lbs (19 kg)	2.52" (64 mm)	Full
9128R	15" x 120" (38 cm x 305 cm)	1.75" (44 mm)	37 lbs (17 kg)	2.86" (73 mm)	Full
9169R	15" x 120" (38 cm x 305 cm)	1.75" (44 mm)	40 lbs (18 kg)	2.86" (73 mm)	Full
9068R	15" x 128" (38 cm x 325 cm)	1.75" (44 mm)	43 lbs (20 kg)	2.52" (64 mm)	Full

OVAL SERIES

- Lightest in its class for optimum efficiency and power transfer
- “Soft” outer rubber compound maximizes traction on ice
- Multiple lug heights for all snow and ice conditions
- Track of choice for multi-time oval winner Jacques Villeneuve



MODEL	DIMENSIONS	LUG HEIGHT	WEIGHT	DRIVE PITCH	CLIP CONFIG.
9812R	15" x 121" (38 cm x 307 cm)	0.525" (13 mm)	33 lbs (15 kg)	2.52" (64 mm)	Full
9982R	13.5" x 116" (34 cm x 295 cm)	0.725" (18 mm)	28 lbs (13 kg)	2.52" (64 mm)	Full
9995R	15" x 116" (38 cm x 295 cm)	0.725" (18 mm)	31 lbs (14 kg)	2.52" (64 mm)	Full
9997R	15" x 121" (38 cm x 307 cm)	0.725" (18 mm)	36 lbs (16 kg)	2.52" (64 mm)	Full

ICE & GRASS DRAG

- 0.525" for low resistance
- 13.5" width is lightweight for maximum top speed
- Multiple lengths for a wide variety of race chassis



MODEL	DIMENSIONS	LUG HEIGHT	WEIGHT	DRIVE PITCH	CLIP CONFIG.
9084R	13.5" x 144" (34 cm x 366 cm)	0.525" (13 mm)	35 lbs (16 kg)	2.52" (64 mm)	Full
9810R	15" x 121" (38 cm x 307 cm)	0.525" (13 mm)	28 lbs (13 kg)	2.52" (64 mm)	No windows / clips
9811R	15" x 121" (38 cm x 307 cm)	0.525" (13 mm)	33 lbs (15 kg)	2.52" (64 mm)	Full
9862R	15" x 136" (38 cm x 345 cm)	0.525" (13 mm)	37 lbs (17 kg)	2.52" (64 mm)	Full
9902R	13.5" x 128" (34 cm x 325 cm)	0.525" (13 mm)	33 lbs (15 kg)	2.52" (64 mm)	Full
9929R	13.5" x 136" (34 cm x 345 cm)	0.525" (13 mm)	TBA	2.52" (64 mm)	No windows / clips
9937R	13.5" x 136" (34 cm x 345 cm)	0.525" (13 mm)	34 lbs (15 kg)	2.52" (64 mm)	Full
9976R	13.5" x 144" (34 cm x 366 cm)	0.525" (13 mm)	31 lbs (14 kg)	2.52" (64 mm)	No windows / clips

ASPHALT DRAG

- Soft outer rubber provides traction on paved surfaces
- 10.625" width is lightweight for maximum top speed
- Multiple lengths for a wide variety of race chassis



MODEL	DIMENSIONS	LUG HEIGHT	WEIGHT	DRIVE PITCH	CLIP CONFIG.
9895R	10.625" x 121" (27 cm x 307 cm)	0.625" (16 mm)	33 lbs (15 kg)	2.52" (64 mm)	No windows / clips
9896R	10.625" x 128" (27 cm x 325 cm)	0.625" (16 mm)	35 lbs (16 kg)	2.52" (64 mm)	No windows / clips
9897R	10.625" x 136" (27 cm x 345 cm)	0.625" (16 mm)	37 lbs (17 kg)	2.52" (64 mm)	No windows / clips

THE INDUSTRY LEADER SINCE 1958

Born with the creation of the snowmobile in 1958, Camoplast tracks have been the industry's leading product ever since. Camoplast tracks are original components on more than 90% of snowmobiles manufactured worldwide.

Recognized as the best in the world, Camoplast tracks are made from premium quality rubber and precision-assembled to the strictest tolerances using the most advanced technologies. Camoplast applies the most advanced leading-practices in the design, engineering, manufacturing and testing of tracks and undercarriage systems. We currently have more than 400 rubber compound formulas for a wide variety of applications.

HIGH PERFORMANCE

You will get more performance from your machine by upgrading your original track to a new high-performance Camoplast track. Our Betterfit™ approach ensures that every Camoplast track provides optimal machine performance and traction, longest track, machine and component lifetime, and better comfort while riding your sled.

No matter which Camoplast track you choose, you will enjoy maximum riding excitement, superior traction, long service life, low maintenance and high damage resistance.

To view all Camoplast has to offer, visit our website at www.camoplast.com



Not all tracks can be installed without modifications. Please see your Camoplast dealer for installation procedures. Because of our ongoing commitment to quality and innovation, we reserve the right, at anytime, to discontinue or change specifications, design, models or equipment without incurring any obligation. Camoplast sells only through authorized distributors. Call your local dealer for pricing and availability. Camoplast products are manufactured in USA, and Canada. © All rights reserved. ® and TM are trademarks of Camoplast Inc.