

Humminbird
678 Humminbird Lane
Eufaula, Alabama 36027

Presorted
Standard
U.S. Postage
PAID
Mankato, MN
Permit No. 121



2011



678 Humminbird Lane • Eufaula, AL 36027 • humminbird.com
Johnson Outdoors Marine Electronics, Inc.

©2010 All Rights Reserved

**Humminbird
Consumer and Technical Service**

678 Humminbird Lane
Eufaula, AL 36027
Toll Free: (800) 633-1468
Phone: (334) 687-6613
Fax: (334) 687-1163

**Humminbird
Dealer and Distributor Service**

555 Main Street, Suite 241
Racine, WI 53403
Toll Free: (800) 493-6686
Fax: (800) 451-0387

**Humminbird
Canada**

4180 Harvester Road
Burlington, Ontario L7L 6B6
Phone: (905) 634-0023
Fax: (905) 634-0261

Humminbird, One-Touch, Piranha, SmartCast, Sonar Echo Enhancement, TrueArch, WeatherSense, Matrix, QuadraBeam, Selective Fish ID+, Side Imaging, Fishin' Buddy and WideSide are registered trademarks of Humminbird, Johnson Outdoors Marine Electronics, Inc.

DualBeam PLUS, Fish ID+, HumminbirdPC, Real Time Sonar, Remote Sonar Sensor, X-Press Menu, UniMap, ContourXD, CannonLink, InterLink, 1100 Series, 900 Series, 800 Series, 700 Series, 500 Series, 300 Series and 100 Series, PiranhaMAX, QuadraBeam PLUS, SwitchFire, SideFinding, Down Imaging, ICE Flasher Series and Wireless Sonar Link are trademarks of Humminbird, Johnson Outdoors Marine Electronics, Inc.

Hardware and required XM radio and XM NavWeather monthly subscriptions sold separately. Other fees and taxes, including a one-time activation fee may apply. All programming, fee, and weather data subject to change. NavWeather data displays and individual product availability vary by hardware equipment. Reception of the XM signal may vary depending on location. Subscriptions subject to Customer Agreement available at xmradio.com. XM service only available in the 48 contiguous United States. XM NavWeather is a trademark of XM Satellite Radio Inc. ©2008 XM Satellite Radio Inc. All rights reserved.

Threat Matrix is a registered trademark of Baron Services, Inc.

Navionics is a registered trademark of Navionics, Inc.

LakeMaster is a registered trademark of WayPoint Technology, Inc.

HotMaps is a trademark of Navionics, Inc. and Navionics S.p.A.

RAM is a registered trademark of National Products, Inc.

Specifications are subject to change without notice.

Printed in the U.S.A.



1100 Series™

The higher the stakes. The bigger the stage. The Humminbird® 1100 Series™ is at its best when it's all on the line, thanks to a huge, 10.4" diagonal full-color display with unbelievable 600V x 800H pixel resolution. If that weren't already enough, a dazzling new Superbright LED backlit LCD gives you surefire visibility in direct sunlight.

The biggest, baddest and now, brightest.

As you can see, there's a lot about the 1100 Series™ to like. Combine this amazing, big-screen presentation with exclusive Humminbird Side Imaging® for a 180° view of the lake bottom, with picture-like images up to 240 feet on either side of your boat. The mammoth screen isn't only good for finding fish and structure, you can put it to work with any of our advanced chartplotting and navigational tools, including the built-in ContourXD™ mapping system. If you're really feeling it, share sonar, GPS and waypoints with another Humminbird display via high-speed Ethernet connection. With the 1100 Series™, you can rule the water like never before. All we ask is that you leave a few big ones for the rest of us.

10.4"
600V x 800H

NEW SUPER BRIGHT LED BACKLIT LCD

The huge 10.4" screen provides bright, crystal-clear images for easy viewing in harsh sunlight.



1198c SI Combo



HD 10.4" Display
600V x 800H, 4:3 Color

HD Side Imaging® / Down Imaging™

180° total coverage
455kHz / (2) 86° @ -10db
800kHz / (2) 55° @ -10db

Depth: 150 ft (SI/DI)

8000 W (PTP), 1000 W (RMS)**

50 Channel GPS Humminbird® ContourXD™

DualBeam PLUS™

w/ SwitchFire™
200kHz / 20° @ -10db
83kHz / 60° @ -10db

Depth: 1500 ft (3000 ft*)

Dual SD Card Slots / Upgradeable Software



+ OPTIONAL Navionics® Gold/HotMaps™ | Navionics® Platinum+™ | LakeMaster® | QuadraBeam PLUS™ HumminbirdPC™ | AS WX 1 Satellite Weather | WeatherSense® | CannonLink™

1158c Combo



HD 10.4" Display
600V x 800H, 4:3 Color

DualBeam PLUS™

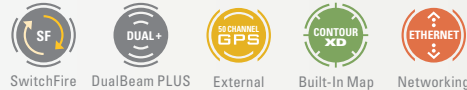
w/ SwitchFire™
200kHz / 20° @ -10db
83kHz / 60° @ -10db

Depth: 1500 ft (3000 ft*)

8000 W (PTP), 1000 W (RMS)**

50 Channel GPS Humminbird® ContourXD™

Dual SD Card Slots / Upgradeable Software



+ OPTIONAL Navionics® Gold/HotMaps™ | Navionics® Platinum+™ | LakeMaster® | QuadraBeam PLUS™ HumminbirdPC™ | AS WX 1 Satellite Weather | WeatherSense® | CannonLink™

On Water Flexibility

DUAL SD CARD SLOTS

1100, 900, 800 and 700 Series™ Combo Models

Dual, integrated SD Card Slots give you maximum productivity from your Humminbird®. One slot gives you access to advanced cartography options, while leaving another open to save screen snapshots, sonar recording and waypoints.

Instant Access

PRESET BUTTONS

1100, 900, 800 and 700 Series™

User programmable presets let you quickly switch between your favorite views. No more messing with multiple menus or keystrokes while on the water.



No fish tale here, just the widescreen 8" full-color displays of the Humminbird® 900 Series™. With the screen's 16:9 aspect ratio, crystal-clear pixel resolution and exclusive Humminbird Side Imaging® and SwitchFire™ Sonar systems, these high-performance units give serious anglers a huge on-the-water advantage. The picture-like images of Humminbird Side Imaging look even better on the generous display of the 900 Series.

No need to exaggerate.

You won't miss a single detail as you scout in minutes what used to take hours. The widescreen display makes for easy-to-read split screen viewing of sonar displays or the incredibly detailed optional cartography packages. Add our powerful HumminbirdPC™ software and you've got an all-in-one tool to dominate the competition. Take your mastery of the water to epic proportions by sharing sonar, GPS and waypoints with additional Humminbird fishfinders via high-speed Ethernet connection. It's no wonder the 900 Series is the stuff of legends.



998c SI Combo



HD 8" Display
480V x 800H, 16:9 Color

HD Side Imaging™/Down Imaging™ 180° total coverage 455kHz / (2) 86° @ -10db 800kHz / (2) 55° @ -10db Depth: 150 ft (SI/DI)	DualBeam PLUS™ w/ SwitchFire™ 200kHz / 20° @ -10db 83kHz / 60° @ -10db 1500 ft (3000 ft*)
8000 W (PTP), 1000 W (RMS)**	
50 Channel GPS Humminbird® ContourXD™ Dual SD Card Slots / Upgradeable Software	



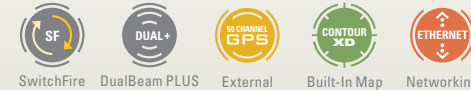
+ OPTIONAL Navionics® Gold/HotMaps™ | Navionics® Platinum+™ | LakeMaster® | QuadraBeam PLUS™ HumminbirdPC™ | AS WX 1 Satellite Weather | WeatherSense® | CannonLink™

958c Combo



HD 8" Display
480V x 800H, 16:9 Color

DualBeam PLUS™ w/ SwitchFire™ 200kHz / 20° @ -10db 83kHz / 60° @ -10db Depth: 1500 ft (3000 ft*)
8000 W (PTP), 1000 W (RMS)**
50 Channel GPS Humminbird® ContourXD™ Dual SD Card Slots / Upgradeable Software



+ OPTIONAL Navionics® Gold/HotMaps™ | Navionics® Platinum+™ | LakeMaster® | QuadraBeam PLUS™ HumminbirdPC™ | AS WX 1 Satellite Weather | WeatherSense® | CannonLink™

480V x 800H
8-inch Screen

WIDE-SCREEN ADVANTAGE
The huge 8" screen provides crystal-clear images, and allows easy split-screen viewing so you won't miss a thing.

*Optional 50 kHz transducers available for extreme deepwater use.
**To obtain 1000 watts, optional deep water transducer required



If it's time to get serious, it's time for the new Humminbird® 800 Series™. These impressive combo units are a blend of form and function, with a generous 7" screen, featuring a 16:9 aspect ratio and incredibly clear picture quality. With Humminbird Side Imaging® and SwitchFire™ Sonar, the 800 Series puts you in control of the most versatile fishfinding system on the water.

Step up to the big time.

You can take full advantage of its advanced offerings as well, including exclusive Humminbird ContourXD™ cartography, as well as GPS track and chartplotting. Elevate your game to new heights by sharing sonar views, GPS capability and more with another Humminbird fishfinder via high-speed Ethernet connection. Everything about the 800 Series™ gives you the edge on the water. Welcome to the big leagues.

898c SI Combo



HD 7" Display
480V x 800H, 16:9 Color

HD Side Imaging™/Down Imaging™ 180° total coverage
455kHz / (2) 86° @ -10db
800kHz / (2) 55° @ -10db

DualBeam PLUS™ w/ SwitchFire™
200kHz / 20° @ -10db
83kHz / 60° @ -10db

Depth: 150 ft (SI/DI) 1500 ft (3000 ft*)

8000 W (PTP), 1000 W (RMS)**

50 Channel GPS Humminbird® ContourXD™

Dual SD Card Slots / Upgradeable Software



858c Combo



HD 7" Display
480V x 800H, 16:9 Color

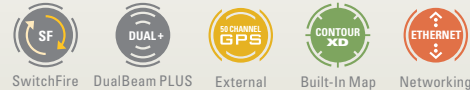
DualBeam PLUS™ w/ SwitchFire™
200kHz / 20° @ -10db
83kHz / 60° @ -10db

Depth: 1500 ft (2000 ft*)

4000 W (PTP), 500 W (RMS)

50 Channel GPS Humminbird® ContourXD™

Dual SD Card Slots / Upgradeable Software



480V x 800H
7-inch Screen

A FULL VIEW

A generous 7" display and pixel resolution provide a sharp look below the surface. Perfect for navigation and split-screen viewing.

+ OPTIONAL Navionics® Gold/HotMaps™ | Navionics® Platinum+™ | LakeMaster® | QuadraBeam PLUS™ HumminbirdPC™ | AS WX 1 Satellite Weather | WeatherSense® | CannonLink™ | Wireless Sonar Link™

+ OPTIONAL Navionics® Gold/HotMaps™ | Navionics® Platinum+™ | LakeMaster® | QuadraBeam PLUS™ HumminbirdPC™ | AS WX 1 Satellite Weather | WeatherSense® | CannonLink™ | Wireless Sonar Link™

700 Series™

For crystal-clear results even in the murkiest water, reach for the powerhouse, High Definition Humminbird® 700 Series™, featuring a 5" diagonal screen, amazing 640V x 640H pixel clarity and unbeatable color and contrast. Packed to the gills with technology, this high-resolution fishfinder boasts an array of advanced features that will have you on the fish in no time.

HD for H₂O.



Best-in-Class Screen Resolution

With exclusive Humminbird SwitchFire™, Side Imaging® and Down Imaging™ Technology, you have more fishfinding options than ever. SwitchFire Sonar lets you choose your underwater view, see every detail or just the returns you want. It's the first sonar that adapts with your fishing conditions. Programmable preset buttons put your favorite views at your fingertips, and dual card slots provide top-notch flexibility on the water. Mount it in-dash, or with our Tilt & Swivel Quick Disconnect Mounting System. Connect to another Humminbird fishfinder for sharing of sonar, GPS and waypoints at blazing Ethernet speeds. There's no doubt: the 700 Series brings it all into focus.



798ci HD SI Combo



HD 5" Display
640V x 640H, 256 Color

Side Imaging®/Down Imaging™

180° total coverage
455kHz / (2) 86° @ -10db
800kHz / (2) 55° @ -10db

DualBeam PLUS™ w/ SwitchFire™

200kHz / 20° @ -10db
83kHz / 60° @ -10db

Depth: 100ft (SI/DI), 1500 ft

4000 W (PTP), 500 W (RMS)

50 Channel GPS

Humminbird® ContourXD™

Dual SD Card Slots /

Upgradeable Software

Quick Disconnect



Side Imaging Down Imaging SwitchFire DualBeam PLUS Internal Built-In Map Networking

+ OPTIONAL Navionics® Gold/HotMaps™ | LakeMaster® QuadraBeam PLUS™ | HumminbirdPC™ AS WX 1 Satellite Weather | WeatherSense® CannonLink™ | Wireless Sonar Link™

788ci HD DI Combo



HD 5" Display
640V x 640H, 256 Color

Down Imaging™

455kHz / 86° @ -10db
800kHz / 55° @ -10db

Single Beam w/ SwitchFire™

200kHz / 20° @ -10db

Depth: 250ft (DI) / 1000 ft

4000 W (PTP), 500 W (RMS)

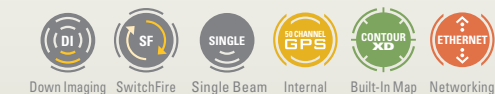
50 Channel GPS

Humminbird® ContourXD™

Dual SD Card Slots /

Upgradeable Software

Quick Disconnect



Down Imaging SwitchFire Single Beam Internal Built-In Map Networking

+ OPTIONAL Navionics® Gold/HotMaps™ | LakeMaster® QuadraBeam PLUS™ | HumminbirdPC™ AS WX 1 Satellite Weather | WeatherSense® CannonLink™ | Wireless Sonar Link™

788ci HD Combo



HD 5" Display
640V x 640H, 256 Color

DualBeam PLUS™

w/ SwitchFire™
200kHz / 20° @ -10db
83kHz / 60° @ -10db

Depth: 1500 ft

4000 W (PTP), 500 W (RMS)

50 Channel GPS

Humminbird® ContourXD™

Dual SD Card Slots /

Upgradeable Software

Quick Disconnect



SwitchFire DualBeam PLUS Internal Built-In Map Networking

+ OPTIONAL Navionics® Gold/HotMaps™ | LakeMaster® QuadraBeam PLUS™ | HumminbirdPC™ AS WX 1 Satellite Weather | WeatherSense® CannonLink™ | Wireless Sonar Link™

778c HD



HD 5" Display
640V x 640H, 256 Color

DualBeam PLUS™

w/ SwitchFire™
200kHz / 20° @ -10db
83kHz / 60° @ -10db

Depth: 1500 ft

4000 W (PTP), 500 W (RMS)

Upgradeable Software

Quick Disconnect



SwitchFire DualBeam PLUS Networking

+ OPTIONAL 50 Channel GPS | QuadraBeam PLUS™ HumminbirdPC™ | WeatherSense® CannonLink™ | Wireless Sonar Link™

728



5" Display
640V x 320H, 16 Level Grayscale

DualBeam PLUS™

w/ SwitchFire™
200kHz / 20° @ -10db
83kHz / 60° @ -10db

Depth: 1500 ft

4000 W (PTP), 500 W (RMS)

Upgradeable Software

Quick Disconnect



SwitchFire DualBeam PLUS

+ OPTIONAL 50 Channel GPS | QuadraBeam PLUS™ HumminbirdPC™ | WeatherSense® CannonLink™ | Wireless Sonar Link™

718



5" Display
320V x 320H, 16 Level Grayscale

DualBeam PLUS™

w/ SwitchFire™
200kHz / 20° @ -10db
83kHz / 60° @ -10db

Depth: 1000 ft

2400 W (PTP), 300 W (RMS)

Upgradeable Software

Quick Disconnect



SwitchFire DualBeam PLUS

+ OPTIONAL 50 Channel GPS | QuadraBeam PLUS™ HumminbirdPC™ | WeatherSense® CannonLink™ | Wireless Sonar Link™

500 Series™

See more of what's down there—for less. Select Humminbird® 500 Series™ models now offer best-in-class, HD screen resolution along with picture-like Down Imaging™ Sonar.

Get the lowdown on what's below your boat.

Timber, rocks, even fish—watch it all take shape on crystal-clear, full-color 4.5" or 5" monochrome displays. With screens that size, it's easy to take advantage of versatile DualBeam PLUS™ Sonar and exclusive Humminbird SwitchFire™ technology. We're talking a beam sensitive enough to track a jig down to 70 feet and separate fish as close as 2.5" apart. Find your way using built-in UniMap™ or up the ante with optional Lakemaster® and Navionics® cartography. Get all this technology in a convenient in-dash mount, or use our Tilt & Swivel Disconnect Mounting System. With the 500 Series™, big things are bound to happen.

HD
5"
640Vx640H
Best-in-Class
Screen Resolution



597ci HD DI Combo



HD 5" Display
640V x 640H, 256 Color

Down Imaging™
455kHz / 86° @ -10db
800kHz / 55° @ -10db

Single Beam w/ SwitchFire™
200kHz / 20° @ -10db

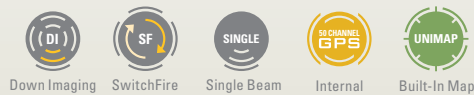
Depth: 250ft (DI), 1000 ft

4000 W (PTP), 500 W (RMS)

50 Channel GPS
Humminbird® UniMap™

Single SD Card Slot

Quick Disconnect



+ OPTIONAL Navionics®Gold/HotMaps™ | LakeMaster®

597ci HD Combo



HD 5" Display
640V x 640H, 256 Color

DualBeam PLUS™
w/ SwitchFire™
200kHz / 20° @ -10db
83kHz / 60° @ -10db

Depth: 1200 ft

4000 W (PTP), 500 W (RMS)

50 Channel GPS
Humminbird® UniMap™

Single SD Card Slot

Quick Disconnect



+ OPTIONAL Navionics®Gold/HotMaps™ | LakeMaster®

596c HD DI



HD 5" Display
640V x 640H, 256 Color

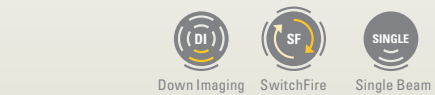
Down Imaging™
455kHz / 86° @ -10db
800kHz / 55° @ -10db

Single Beam
w/ SwitchFire™
200kHz / 20° @ -10db

Depth: 250ft (DI), 1000 ft

4000 W (PTP), 500 W (RMS)

Quick Disconnect



596c HD



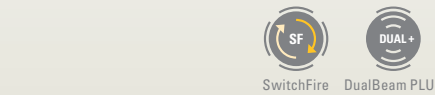
HD 5" Display
640V x 640H, 256 Color

DualBeam PLUS™
w/ SwitchFire™
200kHz / 20° @ -10db
83kHz / 60° @ -10db

Depth: 1200 ft

4000 W (PTP), 500 W (RMS)

Quick Disconnect



587ci HD Combo



HD 4.5" Display
640V x 480H, 256 Color

DualBeam PLUS™
w/ SwitchFire™
200kHz / 20° @ -10db
83kHz / 60° @ -10db

Depth: 1000 ft

2400 W (PTP), 300 W (RMS)

50 Channel GPS
Humminbird® UniMap™

Single SD Card Slot

Quick Disconnect



+ OPTIONAL Navionics®Gold/HotMaps™ | LakeMaster®

586c HD



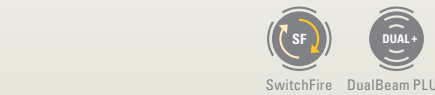
HD 4.5" Display
640V x 480H, 256 Color

DualBeam PLUS™
w/ SwitchFire™
200kHz / 20° @ -10db
83kHz / 60° @ -10db

Depth: 1000 ft

2400 W (PTP), 300 W (RMS)

Quick Disconnect





640V
X
320H
Best 5-inch
Monochrome Screen

BIG BUDGET FEATURES AT A BARGAIN.
Cash in on the industry's top value for 5-inch monochrome displays. The 500 Series™ offers best-in-class screen resolution, along with exclusive features like 50 Channel GPS.

581i Combo



Quick Disconnect

5" Display
640V x 320H, 16 Level Grayscale
DualBeam PLUS™ w/ SwitchFire™
200kHz / 20° @ -10db
83kHz / 60° @ -10db
Depth: 800 ft
2400 W (PTP), 300 W (RMS)
50 Channel GPS
Humminbird® UniMap™
Single SD Card Slot



+ OPTIONAL Navionics® Gold/HotMaps™

570 DI 570 DI Portable



Quick Disconnect

5" Display
640V x 320H, 16 Level Grayscale
Down Imaging™
455kHz / 86° @ -10db
800kHz / 55° @ -10db
Single Beam
w/ SwitchFire™
200kHz / 20° @ -10db
Depth: 250ft (DI), 1000 ft
2400 W (PTP), 300 W (RMS)



570 DI Portable
▪ Rugged Carry Case
▪ Suction Cup Transducer
▪ 7Ah Battery and Charger Included



570 570 Portable



Quick Disconnect

5" Display
640V x 320H, 12 Level Grayscale
DualBeam PLUS™
w/ SwitchFire™
200kHz / 20° @ -10db
83kHz / 60° @ -10db
Depth: 800 ft
2400 W (PTP), 300 W (RMS)



570 Portable
▪ Rugged Carry Case
▪ Suction Cup Transducer
▪ 7Ah Battery and Charger Included

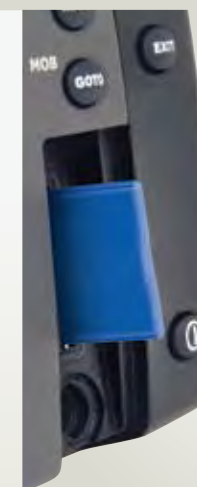


560



Quick Disconnect

5" Display
320V x 320H, 12 Level Grayscale
Single Beam
w/ SwitchFire™
200kHz / 20° @ -10db
Depth: 800 ft
2400 W (PTP), 300 W (RMS)



Built-in Expandability

SINGLE SD CARD SLOT
On all 500 and 300 Series™ COMBO Models

- Compatible with LakeMaster®, Navionics® Gold and HotMaps™
- Save a screen snapshot of your favorite spot.
- Record your sonar readings to replay over and over.
- Save waypoints and other locations of interest.

*SD memory card not included.

The Humminbird® 300 Series™ is designed for those who demand top-of-the-line technology, but don't have space for a bigger fishfinder. With oceans of features, the 300 Series performs way beyond its size, and is right at home in the most extreme fishing situations.

The world's biggest compact fishfinder.

Both color and monochrome displays are available with exclusive SwitchFire™ technology, so you'll get the most out of the DualBeam PLUS™ sonar that gives you wide coverage with the best picture of the bottom. It's powerful sonar technology built into a pint-size package. With internal GPS and built-in UniMap™, you'll be able to pinpoint your position with ease. Built-in SD card slots on our 300 Series™ Combo models allow you to upgrade to LakeMaster® or Navionics® cartography for enhanced navigation and map detail. If you need to save space, but don't want to compromise performance, look no further than the 300 Series.

385ci Combo 385ci Combo Portable



3.5" Display 320V x 240H, 256 Color

DualBeam PLUS™ w/ SwitchFire™
200kHz / 20° @ -10db
83kHz / 60° @ -10db

Depth: 1000 ft

2400 W (PTP), 300 W (RMS)

50 Channel GPS Humminbird® UniMap™

Single SD Card Slot



385ci Combo Portable

- Soft-sided carry case
- Suction cup transducer
- 7Ah battery and charger
- Optional ice fishing transducer available



+ OPTIONAL Navionics®Gold/HotMaps™ | LakeMaster®

385ci Combo Kayak

If you enjoy the thrill of catching the big one from a kayak, this is the fishfinder for you. This all-in-one unit combines fishfinding, mapping and GPS with a brilliant color display in a package specifically designed for your kayak.

It's in the Box

- 385ci Combo
- Kayak Transducer Installation Kit
- 12 Volt (7 Amp Hour) Battery
- Quick Disconnect Protective Cap
- Battery Charger
- Battery Dry Bag
- Unit Cover



365i Combo



4" Display 320V x 240H, 16 Level Grayscale

DualBeam PLUS™ w/ SwitchFire™
200kHz / 20° @ -10db
83kHz / 60° @ -10db

Depth: 1000 ft

2400 W (PTP), 300 W (RMS)

50 Channel GPS Humminbird® UniMap™

Single SD Card Slot

Quick Disconnect



+ OPTIONAL Navionics®Gold/HotMaps™

345c 345c Portable



3.5" Display
320V x 240H
256 Color

DualBeam PLUS™
w/ SwitchFire™
200kHz / 20° @ -10db
83kHz / 60° @ -10db

Depth: 1000 ft

2400 W (PTP)
300 W (RMS)

Quick Disconnect



+ OPTIONAL Navionics®Gold/HotMaps™



345c Portable

- Soft-sided carry case
- Suction cup transducer
- 7Ah battery and charger
- Optional ice fishing transducer available



4" Display
320V x 240H
16 Level Grayscale

DualBeam PLUS™
w/ SwitchFire™
200kHz / 20° @ -10db
83kHz / 60° @ -10db

Depth: 1000 ft

2400 W (PTP)
300 W (RMS)

Quick Disconnect



+ OPTIONAL Navionics®Gold/HotMaps™

With one touch you can take advantage of the advanced PiranhaMAX™ Series fishfinders. Unlock the power of Fish ID+, fish alarms, depth alarms and zoom.

With one button, the PiranhaMAX packs a bite.

You won't believe how easy it is to put the high-performance sonar to work for you. Simply mount your PiranhaMAX, and let the Color TFT or contrast-enhanced, clear edge grayscale displays show you everything, even in direct sunlight. Catch more fish and simplify your life with the angler's #1 choice: Humminbird® PiranhaMAX.



⚡ PiranhaMAX 190c



3.5" Display
320V x 240H
256 Color

Single Beam
200kHz / 20° @ -10db

Depth: 800 ft

1600 W (PTP)
200 W (RMS)

↻ Tilt and Swivel



Single Beam

⚡ PiranhaMAX 180



4" Display
240V x 160H
8 Level Grayscale

TriBeam
200kHz / 20° @ -10db
455kHz / 35° @ -10db (x2)

Depth: 800 ft

1600 W (PTP)
200 W (RMS)

↻ Tilt and Swivel



TriBeam

⚡ PiranhaMAX 170



4" Display
240V x 160H
8 Level Grayscale

Dual Beam™
83kHz / 60° @ -10db
200kHz / 20° @ -10db

Depth: 800 ft

1600 W (PTP)
200 W (RMS)

↻ Tilt and Swivel



Dual Beam

⚡ PiranhaMAX 160

PiranhaMAX 160 Portable



4" Display
160V x 128H
4 Level Grayscale

Dual Beam™
83kHz / 60° @ -10db
200kHz / 20° @ -10db

Depth: 600 ft

800 W (PTP)
100 W (RMS)

↗ Tilt Mount



Dual Beam

⚡ PiranhaMAX 150

PiranhaMAX 150 Portable



4" Display
160V x 128H
4 Level Grayscale

Single Beam
200kHz / 20° @ -10db

Depth: 600 ft

800 W (PTP)
100 W (RMS)

↗ Tilt Mount



Single Beam

⚡ PiranhaMAX 230PT



4" Display
240V x 160H
8 Level Grayscale

Dual Beam™
83kHz / 60° @ -10db
200kHz / 20° @ -10db

Depth: 600 ft

SmartCast™
125kHz / 90° @ -10db
Depth: 120 ft

800 W (PTP), 100 W (RMS)



Dual Beam



Sonar Link



Take it With You

HUMMINBIRD® PORTABLE SYSTEMS
Available for PiranhaMAX 160 and 150 as well as select 300, 500, and ICE Series Models

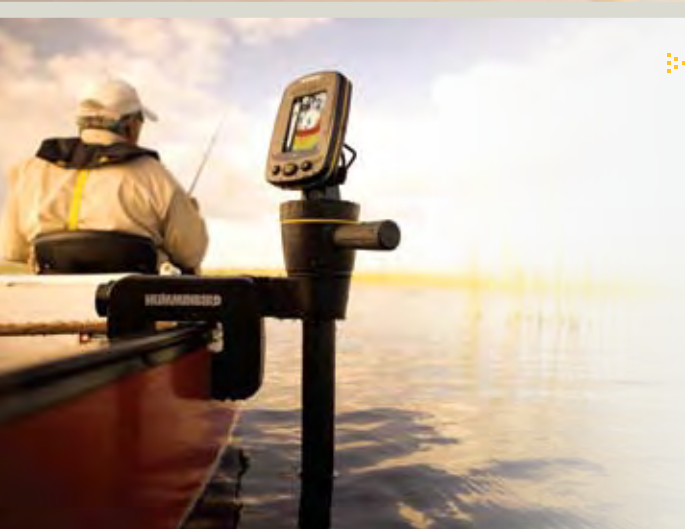
- Soft-sided carry case
- 7Ah battery and charger included
- Suction cup transducer
- Optional ice fishing transducer available

Fishin' Buddy®

Use it on your boat, your buddy's boat, a dock or even a float tube. If you're near water, Fishin' Buddy® fishfinders are your best friend. The ultimate in portability, you can clamp your Fishin' Buddy almost anywhere, with no rigging or wiring, or even a transducer to mount.

Fishin' is always more fun with a buddy.

Don't forget the high-resolution monochrome and color displays, SideFinding™ Sonar, and easy One-Touch® control. All there to get you hooking into fish faster. The 24-inch transducer tube housing reaches the water from most small or mid-size boats; certain models feature a telescoping 40-inch transducer. Finally, the whole thing is powered by just six AA batteries for hours of fun and fishing.



140c Fishin' Buddy




3.5" Display
320V x 240H
256 Color

SideFinding™ (Down/Side)
200kHz / 34° @ -10db
455kHz / 10° @ -10db

Depth: 240 ft, Side: 120 ft

24-40" Telescopic Pole

1000 W (PTP)
125 W (RMS)


SideFinding

120 Fishin' Buddy




4" Display
240V x 160H
8 Level Grayscale

SideFinding™ (Down/Side)
200kHz / 34° @ -10db
455kHz / 10° @ -10db

Depth: 240 ft, Side: 120 ft

24" Fixed Pole

1000 W (PTP)
125 W (RMS)


SideFinding

110 Fishin' Buddy




4" Display
160V x 128H
8 Level Grayscale

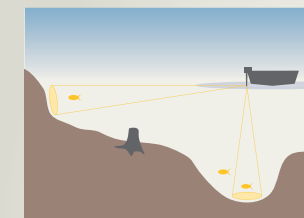
Single Beam (Down)
200kHz / 34° @ -10db

Depth: 240 ft

24" Fixed Pole

1000 W (PTP)
125 W (RMS)


Single Beam



POINT AND CAST

Exclusive SideFinding™ Sonar spots fish all around your boat, out to 120 feet. Simply turn it in the direction you want to search. And with its narrow cone, when you see a fish onscreen, your transducer is pointing directly at it, so you know exactly where to cast.



NO-RIG MOUNT

With the multi-directional clamp mount on each Fishin' Buddy®, you can quickly and easily mount it nearly anywhere, in any orientation. Best of all, there are no wires or rigging, period.



Tie. Cast. Spy. That's how you use the innovative Humminbird® SmartCast®. Once you tie the SmartCast Remote Sonar Sensor™ to your line, you will have instant information about fish, structure, depth and even water temperature anywhere you cast.

Go from angler to secret agent.

It's completely portable, so you can fish wherever and whenever you want, even places other fishfinders can't. From the shore, from the dock, from a kayak, float tube or boat. This unique wireless technology will help you gather intelligence anywhere you go.



Single Beam
125kHz / 90° @ -10db
Depth: 120 ft

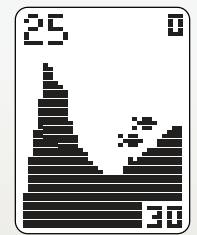


RF45

The Remote Sonar Sensor™ (RSS) uses an internal transducer to collect data, which it then transmits wirelessly to the display in real time.

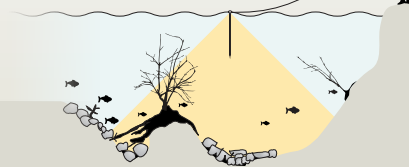
The RF45 Advanced Remote Sensor offers:

- 120 feet of depth capability
- 500 hours of in-the-water use
- Water surface temperature readings
- A light for night fishing
- Programmable A/B channels so you can fish with a buddy, without crossing signals



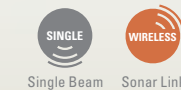
Easy to Use

Tie SmartCast® to your line. Cast. Then reel in at a slow, steady rate with your rod tip up. The sonar beam will scan the area, transmitting data wirelessly—in real time—to your display.



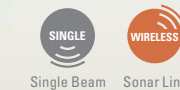
RF35

1 1/4" Display
48V x 32H
Single Beam
125kHz / 90° @ -10db
75 ft wireless range
Depth: 120 ft
Temperature



RF25

1 1/4" Display
48V x 32H
Single Beam
125kHz / 90° @ -10db
150 ft wireless range
Depth: 120 ft
Temperature



RF15

3 7/8" Display
160V x 132H, 4 Level Grayscale
Single Beam
125kHz / 90° @ -10db
100 ft wireless range
Depth: 120 ft
Temperature



The Humminbird® ICE™ Series is loaded with innovations that will have you chomping at the bit for the first big freeze. Extreme-temperature LCD technology instantly finds and reports the lake bottom, setting the flasher scale automatically. Choose from three-color and exclusive six-color palettes to see what's down there.

Take ice fishing out of the ice age.

Powerful DualBeam PLUS™ sonar delivers plenty of coverage options and the customizable target line will keep you in the bite zone. New ICE 345c and GPS-equipped ICE 385ci units let you toggle between flasher and SwitchFire™ sonar graph views for maximum versatility. Put it all together and you'll be finding fish long after Labor Day.



ICE 55



6-Color Flasher
526 Segment, LCD center

Selectable Dual Frequency
240kHz / 19° @ -3db
455kHz / 9° @ -3db

Depth: 200 ft

2400 W (PTP)
300 W (RMS)

9Ah Battery / Carry Case

- 2.5" LCD CENTER
Display
- ULTRA-BRIGHT FLASHER
Fiber Optic
- DUAL
Dual Frequency
- TARGET LINE
Target Line
- 2X ZOOM
Dynamic Zoom

SEE PAGE 43 FOR EXCLUSIVE HUMMINBIRD® ICE FISHING INNOVATIONS

ICE 55/385ci Combo



The ICE 55/385ci Combo takes Humminbird icefishing innovation to new depths, coupling the industry's most advanced ice flasher with a GPS-powered display that supports LakeMaster® cartography. The included ice transducers let you fish two holes simultaneously. The ATV Bracket lets you attach your 385ci Combo to an ATV or snowmobile for easy lake navigation.

HAVE IT ALL

- ICE 55 (details to left)
- ICE 385ci Combo (details pg. 42)
- Quick Disconnect windshield RAM® Mount
- Quick Disconnect ATV/Snowmobile RAM® Mount
- Two Ice Transducers

ICE 45



3-Color Flasher
526 Segment, LCD center

Selectable Dual Frequency
240kHz / 19° @ -3db
455kHz / 9° @ -3db

Depth: 200 ft

1800 W (PTP)
225 W (RMS)

7Ah Battery

- 2.5" LCD CENTER
Display
- ULTRA-BRIGHT FLASHER
Fiber-Optic
- DUAL
Dual Frequency
- 2X ZOOM
Dynamic Zoom

+ OPTIONAL Carry Case

ICE 35



3-Color Flasher
526 Segment

Selectable Dual Frequency
240kHz / 19° @ -3db
455kHz / 9° @ -3db

Depth: 200 ft

800 W (PTP)
100 W (RMS)

7Ah Battery

- ULTRA-BRIGHT FLASHER
Fiber-Optic
- DUAL
Dual Frequency
- 2X ZOOM
Dynamic Zoom

+ OPTIONAL Carry Case



ICE 385ci Combo

3.5" Display 320V x 240H, 256 Color

DualBeam PLUS™ w/ Switchfire™
200kHz / 20° @ -10db
83kHz / 60° @ -10db

Depth: 1000 ft

2400 W (PTP), 300 W (RMS)

50 Channel GPS Humminbird® Unimap™

Single SD Card Slot / Upgradeable Software

Battery 12 VDC / Carry Case

Quick Disconnect



ICE 345c

3.5" Display 320V x 240H, 256 Color

DualBeam PLUS™ w/ Switchfire™
200kHz / 20° @ -10db
83kHz / 60° @ -10db

Depth: 1000 ft

2400 W (PTP), 300 W (RMS)

Battery 12 VDC / Carry Case

Quick Disconnect



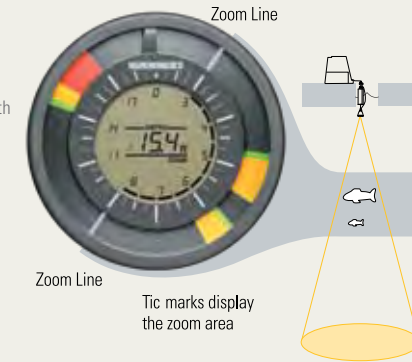
+ OPTIONAL Suction Cup Transducer

+ OPTIONAL Navionics® Gold/HotMaps™ | LakeMaster® | ATV Handlebar Mount | Suction Cup Transducer

THE HUMMINBIRD ICE FISHING ADVANTAGE

2X DYNAMIC ZOOM

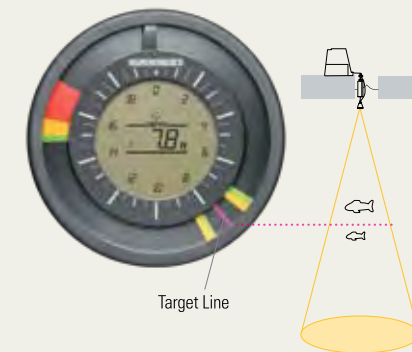
Magnify your view of a specific depth range and rotate the dial to change the area you're zooming into, while you're viewing it. Changing on the fly has never been easier.



TARGET LINE

(ICE 55, ICE 385ci, ICE 345c)

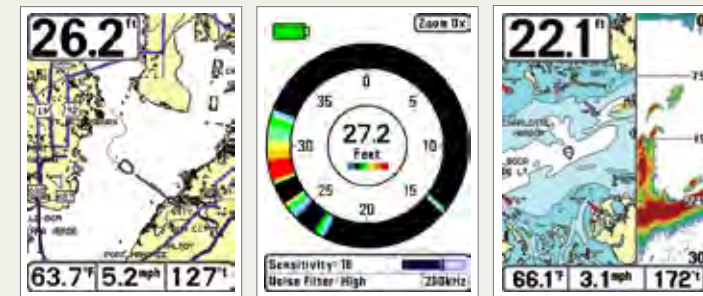
Are the fish active at a particular spot in the water column? Use the Target Line to find out the exact depth of any point on the flasher dial. A purple line on the display shows you where the activity is.



MULTIPLE VIEWING OPTIONS

(ICE 385ci)

Change your perspective on icefishing. Supplement traditional flasher views with SwitchFire™ sonar graphs and even map views for the most in-depth look at the deep.



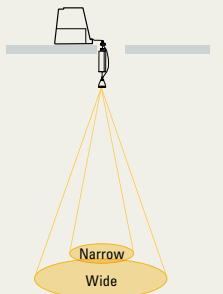
Finding your way is just as easy as finding fish, thanks to built-in Humminbird UniMap™ (shown) or optional LakeMaster™ and Navionics® cartography.

With all the features of the ICE 55 Flasher, the ICE 385ci Combo and included second ice transducer let you fish two holes simultaneously.

Combined with the optional portable transducer, the ICE 385ci Combo gives you everything you need for warm weather fishfinding.

DUAL FREQUENCY SONAR

Cast a wide net or focus on the bottom. It's up to you. Use a wide beam and detect more fish. Opt for a narrow beam to get greater resolution and detail.



ICE 55, ICE 45 & ICE 35 Beams

Narrow: 9° / 455kHz | Wide: 19° / 240kHz

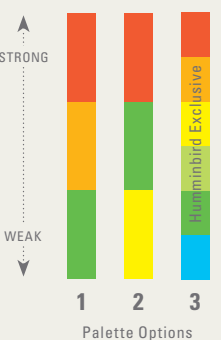
ICE 385ci & ICE 345c Beams

Narrow: 20° / 200kHz | Wide: 60° / 83kHz

THREE COLOR PALETTES

(ICE 55, ICE 385ci, ICE 345)

Choose from one of three different color palettes to control how sonar returns are displayed.



ATV/SNOWMOBILE & WINDSHIELD RAM® MOUNTS
(ICE 385ci & ICE 55/385ci Combo)

Before you find fish, find the perfect fishing hole using your GPS-equipped 385ci Combo unit. These easy-to-install Quick Disconnect brackets mount your 385ci to an ATV, snowmobile or vehicle windshield.



Depth Gauges

Improved depth perception.

Humminbird® Digital Depth Gauges give you instant, reliable depth readings even at speeds of up to 70 mph, and can alert you to both deep and shallow water. Installation in any existing 2 1/8" opening is easy, and they wire to the ignition to automatically turn on. We didn't stop there: the display reads in feet, meters or fathoms, and you can pick a color to complement your boat's gauges.



HDR 650

In-Dash Digital Depthsounder



1.25" LCD Display

- 200kHz operating frequency
- 600 ft depth
- Deep/Shallow water alarms



Customizable (2 face plates & 3 trim rings included)

1100 Series™



Model	1198c SI Combo	1158c Combo
Model Options	—	—
Display Size	10.4" Diagonal	10.4" Diagonal
Display Pixel Matrix	600V x 800H	600V x 800H
Display Type	Color TFT	Color TFT
Display Colors/Grayscale	65,000 Colors	65,000 Colors
Sonar - Standard	HD Side Imaging HD Down Imaging DualBeam PLUS	DualBeam PLUS
Sonar Coverage	20°, 60° & 180° @ -10db	20° & 60° @ -10db
Sonar Frequency	50/83/200/455/800 kHz	50/83/200/455 kHz
Sonar Optional	QuadraBeam PLUS	QuadraBeam PLUS
Target Separation	2 1/2 Inches	2 1/2 Inches
Power Output (max.)	1000 Watts (RMS); 8000 Watts (Peak-to-Peak)	1000 Watts (RMS); 8000 Watts (Peak-to-Peak)
Current Draw	1.3 Amps	1.3 Amps
Depth Capability	150 ft SI, 1500 ft & 3000 ft*	1500 ft & 3000 ft*
Temperature	Yes	Yes
Speed	GPS Speed Included	GPS Speed Included
Backlight	Yes	Yes
Waterproof	Yes	Yes
Unit Size - Gimbal Mount	13.1" W x 9.3" H x 2.9" D	13.1" W x 9.3" H x 2.9" D
Unit Size - In-Dash Mount	13.1" W x 8.8" H x 2.9" D	13.1" W x 8.8" H x 2.9" D
Mount	In-dash or Gimbal	In-dash or Gimbal
Transducer - Standard	XHS-9-HDSI-180-T	XNT-9-20-T
Transducer Mounting - Standard	Transom	Inside Hull or Transom
Power Input	10-20 VDC	10-20 VDC

GPS Features

GPS Receiver	●	●
GPS Trackplotting	●	●
GPS Chartplotting	●	●
Waypoints, Routes, Tracks/Points	3,000, 50, 50/20,000	3,000, 50, 50/20,000
Humminbird ContourXD	●	●
Humminbird UniMap	—	—
LakeMaster	○	○
Navionics Gold/HotMaps	○	○
Navionics Platinum	○	○

Optional Add-Ons

GPS Receiver	●	●
Ethernet Networking	○	○
WeatherSense	○	○
Wireless Sonar Link	—	—
CannonLink	○	○
InterLink	○	○
HumminbirdPC	○	○
AS WX 1 Weather Accessory	○	○
Upgradeable Internal Software	○	○

User Features:

SwitchFire Sonar	●	●
Screen Snap Shot to Memory Card	●	●
Sonar Recording	●	●
Split Screen Zoom	●	●
Split Screen Bottom Lock	●	●
3D Chart View	●	●
Large Digits View	●	●
Wide/Narrow Cone Split Screen	●	●
Custom View Selections	●	●
Custom Digital Readout Selection	●	●
Selectable Display Colors	●	●
View Pre-Set Keys	●	●
Temperature Graph	●	●
Temperature Alarm	●	●
Freeze Frame	●	●
Instant Image Update	●	●
Mark Structure on Sonar	●	●
Selective Fish ID+	●	●
Real Time Sonar	●	●
Sonar Echo Enhancement	●	●
Triplog	●	●
X-Press Menu System	●	●

● Included ○ Optional * Optional 50 kHz transducers available for deepwater use

900 Series™



Model	998c SI Combo	958c Combo
Model Options	—	—
Display Size	8" Diagonal	8" Diagonal
Display Pixel Matrix	480V x 800H	480V x 800H
Display Type	Color TFT	Color TFT
Display Colors/Grayscale	65,000 Colors	65,000 Colors
Sonar - Standard	HD Side Imaging HD Down Imaging DualBeam PLUS	DualBeam PLUS
Sonar Coverage	20°, 60° & 180° @ -10db	20° & 60° @ -10db
Sonar Frequency	200/83/455/800 kHz	200/83/455/50 kHz
Sonar Optional	QuadraBeam PLUS	QuadraBeam PLUS
Target Separation	2 1/2 Inches	2 1/2 Inches
Power Output (max.)	1000 Watts (RMS); 8000 Watts (Peak-to-Peak)	1000 Watts (RMS); 8000 Watts (Peak-to-Peak)
Current Draw	780 mA	780 mA
Depth Capability	150 ft SI, 1500 ft & 3000 ft*	1500 ft & 3000 ft*
Temperature	Included	Included
Speed	GPS Speed Included	GPS Speed Included
Backlight	Yes	Yes
Waterproof	Yes	Yes
Unit Size - Gimbal Mount	11 1/4" W x 6 3/4" H x 4 1/4" D	11 1/4" W x 6 3/4" H x 4 1/4" D
Unit Size - In-Dash Mount	11 1/4" W x 6" H x 2 1/2" D	11 1/4" W x 6" H x 2 1/2" D
Mount	In-dash or Gimbal	In-dash or Gimbal
Transducer - Standard	XHS-9-HDSI-180-T	XNT-9-20-T
Transducer Mounting - Standard	Transom	Inside Hull or Transom
Power Input	10-20 VDC	10-20 VDC

GPS Features

GPS Receiver	●	●
GPS Trackplotting	●	●
GPS Chartplotting	●	●
Waypoints, Routes, Tracks/Points	3,000, 50, 50/20,000	3,000, 50, 50/20,000
Humminbird ContourXD	●	●
Humminbird UniMap	—	—
LakeMaster	○	○
Navionics Gold/HotMaps	○	○
Navionics Platinum	○	○

Optional Add-Ons

GPS Receiver	●	●
Ethernet Networking	○	○
WeatherSense	○	○
Wireless Sonar Link	—	—
CannonLink	○	○
InterLink	○	○
HumminbirdPC	○	○
AS WX 1 Weather Accessory	○	○
Upgradeable Internal Software	○	○

User Features:

SwitchFire Sonar	●	●
Screen Snap Shot to Memory Card	●	●
Sonar Recording	●	●
Split Screen Zoom	●	●
Split Screen Bottom Lock	●	●
3D Chart View	●	●
Large Digits View	●	●
Wide/Narrow Cone Split Screen	●	●
Custom View Selections	●	●
Custom Digital Readout Selection	●	●
Selectable Display Colors	●	●
View Pre-Set Keys	●	●
Temperature Graph	●	●
Temperature Alarm	●	●
Freeze Frame	●	●
Instant Image Update	●	●
Mark Structure on Sonar	●	●
Selective Fish ID+	●	●
Real Time Sonar	●	●
Sonar Echo Enhancement	●	●
Triplog	●	●
X-Press Menu System	●	●

● Included ○ Optional

800 Series™



Model	898c SI Combo	858c Combo
Model Options	—	—
Display Size	7" Diagonal	7" Diagonal
Display Pixel Matrix	480V x 800H	480V x 800H
Display Type	Color TFT	Color TFT
Display Colors/Grayscale	65,000 Colors	65,000 Colors
Sonar - Standard	HD Side Imaging HD Down Imaging DualBeam PLUS	DualBeam PLUS
Sonar Coverage	20°, 60° & 180° @ -10db	20° & 60° @ -10db
Sonar Frequency	200/83/455/800 kHz	200/83/455/50 kHz
Sonar Optional	QuadraBeam PLUS	QuadraBeam PLUS
Target Separation	2 1/2 Inches	2 1/2 Inches
Power Output (max.)	1000 Watts (RMS); 8000 Watts (Peak-to-Peak)	500 Watts (RMS); 4000 Watts (Peak-to-Peak)
Current Draw	780 mA	780 mA
Depth Capability	150 ft SI, 1500 ft & 3000 ft*	1500 ft & 2000 ft*
Temperature	Included	Included
Speed	GPS Speed Included	GPS Speed Included
Backlight	Yes	Yes
Waterproof	Yes	Yes
Unit Size - Gimbal Mount	11 1/4" W x 6 3/4" H x 4 1/4" D	11 1/4" W x 6 3/4" H x 4 1/4" D
Unit Size - In-Dash Mount	11 1/4" W x 6" H x 2 1/2" D	11 1/4" W x 6" H x 2 1/2" D
Mount	In-dash or Gimbal	In-dash or Gimbal
Transducer - Standard	XHS-9-HDSI-180-T	XNT-9-20-T
Transducer Mounting - Standard	Transom	Inside Hull or Transom
Power Input	10-20 VDC	10-20 VDC

GPS Features

GPS Receiver	●	●
GPS Trackplotting	●	●
GPS Chartplotting	●	●
Waypoints, Routes, Tracks/Points	3,000, 50, 50/20,000	3,000, 50, 50/20,000
Humminbird ContourXD	●	●
Humminbird UniMap	—	—
LakeMaster	○	○
Navionics Gold/HotMaps	○	○
Navionics Platinum	○	○

Optional Add-Ons

GPS Receiver	●	●
Ethernet Networking	○	○
WeatherSense	○	○
Wireless Sonar Link	—	—
CannonLink	○	○
InterLink	○	○
HumminbirdPC	○	○
AS WX 1 Weather Accessory	○	○
Upgradeable Internal Software	○	○

User Features:

SwitchFire Sonar	●	●
Screen Snap Shot to Memory Card	●	●
Sonar Recording	●	●
Split Screen Zoom	●	●
Split Screen Bottom Lock	●	●
3D Chart View	●	●
Large Digits View	●	●
Wide/Narrow Cone Split Screen	●	●
Custom View Selections	●	●
Custom Digital Readout Selection	●	●
Selectable Display Colors	●	●
View Pre-Set Keys	●	●
Temperature Graph	●	●
Temperature Alarm	●	●
Freeze Frame	●	●
Instant Image Update	●	●
Mark Structure on Sonar	●	●
Selective Fish ID+	●	●
Real Time Sonar	●	●
Sonar Echo Enhancement	●	●
Triplog	●	●
X-Press Menu System	●	●

● Included ○ Optional Features and specifications subject to change without notice

700 & 500 Series™



Model	798ci HD SI Combo	788ci HD DI Combo	788ci HD Combo	778c HD	728	718	597ci HD DI Combo	597ci HD Combo	596c HD DI	596c HD	587ci HD Combo	586c HD	581i Combo	570 DI	570	560	
Model Options	—	—	—	—	—	—	—	—	—	—	—	—	—	570 DI Portable	570 Portable	—	
Display Size	5" Diagonal	5" Diagonal	5" Diagonal	5" Diagonal	5" Diagonal	5" Diagonal	5" Diagonal	5" Diagonal	5" Diagonal	5" Diagonal	4.5" Diagonal	4.5" Diagonal	5" Diagonal	5" Diagonal	5" Diagonal	5" Diagonal	
Display Pixel Matrix	640V x 640H	640V x 640H	640V x 640H	640V x 640H	640V x 320H	320V x 320H	640V x 640H	640V x 640H	640V x 640H	640V x 640H	640V x 480H	640V x 480H	640V x 320H	640V x 320H	640V x 320H	320V x 320H	
Display Type	Color TFT	Color TFT	Color TFT	Color TFT	FSTN LCD	FSTN LCD	Color TFT	Color TFT	Color TFT	Color TFT	Color TFT	Color TFT	FSTN LCD	FSTN LCD	FSTN LCD	FSTN LCD	
Display Colors/Grayscale	256	256	256	256	16 Level Grayscale	16 Level Grayscale	256 Colors	256 Colors	256 Colors	256 Colors	256 Colors	256 Colors	16 Level Grayscale	16 Level Grayscale	12 Level Grayscale	12 Level Grayscale	
Sonar - Standard	Side Imaging Down Imaging DualBeam PLUS	Down Imaging Single Beam	DualBeam PLUS	DualBeam PLUS	DualBeam PLUS	DualBeam PLUS	Down Imaging Single Beam	DualBeam PLUS	Down Imaging Single Beam	DualBeam PLUS	DualBeam PLUS	DualBeam PLUS	DualBeam PLUS	Down Imaging Single Beam	DualBeam PLUS	Single Beam	
Sonar Coverage	20°, 60° & 180° @ -10db	20°, 55° & 86° @ -10db	20° & 60° @ -10db	20° & 60° @ -10db	20° & 60° @ -10db	20° & 60° @ -10db	20°, 55° & 86° @ -10db	20° & 60° @ -10db	20°, 55° & 86° @ -10db	20° & 60° @ -10db	20° & 60° @ -10db	20° & 60° @ -10db	20° & 60° @ -10db	20°, 55° & 86° @ -10db	20° & 60° @ -10db	20° @ -10db	
Sonar Frequency	200/83/455 kHz	455/800/200 kHz	200/83/455 kHz	200/83/455 kHz	200/83/455 kHz	200/83/455 kHz	455/800/200 kHz	200/83 kHz	455/800/200 kHz	200/83 kHz	200/83 kHz	200/83 kHz	200/83 kHz	455/800/200 kHz	200/83 kHz	200kHz	
Sonar Optional	QuadraBeam PLUS	—	QuadraBeam PLUS	QuadraBeam PLUS	QuadraBeam PLUS	QuadraBeam PLUS	—	—	—	—	—	—	—	—	—	—	
Target Separation	2 1/2 Inches	2 1/2 Inches	2 1/2 Inches	2 1/2 Inches	2 1/2 Inches	2 1/2 Inches	2 1/2 Inches	2 1/2 Inches	2 1/2 Inches	2 1/2 Inches	2 1/2 Inches	2 1/2 Inches	2 1/2 Inches	2 1/2 Inches	2 1/2 Inches	2 1/2 Inches	
Power Output (max.)	500 Watts (RMS); 4000 Watts (Peak-to-Peak)	500 Watts (RMS); 4000 Watts (Peak-to-Peak)	500 Watts (RMS); 4000 Watts (Peak-to-Peak)	500 Watts (RMS); 4000 Watts (Peak-to-Peak)	500 Watts (RMS); 4000 Watts (Peak-to-Peak)	300 Watts (RMS); 2400 Watts (Peak-to-Peak)	500 Watts (RMS); 4000 Watts (Peak-to-Peak)	500 Watts (RMS); 4000 Watts (Peak-to-Peak)	500 Watts (RMS); 4000 Watts (Peak-to-Peak)	500 Watts (RMS); 4000 Watts (Peak-to-Peak)	300 Watts (RMS); 2400 Watts (Peak-to-Peak)	300 Watts (RMS); 2400 Watts (Peak-to-Peak)	300 Watts (RMS); 2400 Watts (Peak-to-Peak)	300 Watts (RMS); 2400 Watts (Peak-to-Peak)	300 Watts (RMS); 2400 Watts (Peak-to-Peak)	300 Watts (RMS); 2400 Watts (Peak-to-Peak)	
Current Draw	615 mA	615 mA	615 mA	615 mA	200 mA	200 mA	615 mA	615 mA	615 mA	615 mA	615 mA	615 mA	200 mA	200 mA	200 mA	200 mA	
Depth Capability	100 ft SI & 1500 ft	250 ft DI & 1000 ft	1500 ft	1500 ft	1500 ft	1000 ft	250 ft DI & 1000 ft	1000 ft	250 ft DI & 1000 ft	1000 ft	1000 ft	1000 ft	800 ft	250 ft DI & 1000 ft	800 ft	800 ft	
Temperature	Included	Included	Included	Included	Included	Included	Included	Included	Included	Included	Included	Included	Included	Included	Included	Included	
Speed	GPS Speed Included	GPS Speed Included	GPS Speed Included	Capable	Capable	Capable	GPS Speed Included	GPS Speed Included	Capable	Capable	GPS Speed Included	Capable	GPS Speed Included	Capable	Capable	Capable	
Backlight	Yes	Yes	Yes	Yes	Yes	Yes	Yes	Yes	Yes	Yes	Yes	Yes	Yes	Yes	Yes	Yes	
Waterproof	Yes	Yes	Yes	Yes	Yes	Yes	Yes	Yes	Yes	Yes	Yes	Yes	Yes	Yes	Yes	Yes	
Unit Size - Gimbale Mount	6.9" W x 7.5" H x 4.5" D	6.9" W x 7.5" H x 4.5" D	6.9" W x 7.5" H x 4.5" D	6.9" W x 7.5" H x 4.5" D	6.9" W x 7.5" H x 4.5" D	6.9" W x 7.5" H x 4.5" D	6.9" W x 7.5" H x 4.5" D	6.9" W x 7.5" H x 4.5" D	6.9" W x 7.5" H x 4.5" D	6.9" W x 7.5" H x 4.5" D	6.9" W x 7.5" H x 4.5" D	6.9" W x 7.5" H x 4.5" D	6.9" W x 7.5" H x 4.5" D	7.25" W x 7" H x 4" D	7.25" W x 7" H x 4" D	7.25" W x 7" H x 4" D	7.25" W x 7" H x 4" D
Unit Size - In-Dash Mount	6.9" W x 5.4" H x 1.25" D	6.9" W x 5.4" H x 1.25" D	6.9" W x 5.4" H x 1.25" D	6.9" W x 5.4" H x 1.25" D	6.9" W x 5.4" H x 1.25" D	6.9" W x 5.4" H x 1.25" D	6.9" W x 5.4" H x 1.25" D	6.9" W x 5.4" H x 1.25" D	6.9" W x 5.4" H x 1.25" D	6.9" W x 5.4" H x 1.25" D	6.9" W x 5.4" H x 1.25" D	6.9" W x 5.4" H x 1.25" D	6.9" W x 5.4" H x 1.25" D	—	—	—	—
Mount	Quick Disconnect Optional In-dash*	Quick Disconnect Optional In-dash*	Quick Disconnect Optional In-dash*	Quick Disconnect Optional In-dash*	Quick Disconnect Optional In-dash*	Quick Disconnect Optional In-dash*	Quick Disconnect Optional In-dash*	Quick Disconnect Optional In-dash*	Quick Disconnect Optional In-dash*	Quick Disconnect Optional In-dash*	Quick Disconnect Optional In-dash*	Quick Disconnect Optional In-dash*	Quick Disconnect Optional In-dash*	Quick Disconnect	Quick Disconnect	Quick Disconnect	Quick Disconnect
Transducer - Standard	XNT-9-SI-180-T	XNT-9-DI-T	XNT-9-20-T	XNT-9-20-T	XNT-9-20-T	XNT-9-20-T	XNT-9-DI-T	XNT-9-20-T	XNT-9-DI-T	XNT-9-20-T	XNT-9-20-T	XNT-9-20-T	XNT-9-20-T	XNT-9-20-T	XNT-9-DI-T	XNT-9-20-T	XNT-9-20-T
Transducer Mounting - Standard	Transom	Transom	Transom	Transom	Transom	Transom	Transom	Transom	Transom	Transom	Transom	Transom	Transom	Transom	Transom	Transom	Transom
Power Input	10-20 VDC	10-20 VDC	10-20 VDC	10-20 VDC	10-20 VDC	10-20 VDC	10-20 VDC	10-20 VDC	10-20 VDC	10-20 VDC	10-20 VDC	10-20 VDC	10-20 VDC	10-20 VDC	10-20 VDC	10-20 VDC	

GPS Features	798ci HD SI Combo	788ci HD DI Combo	788ci HD Combo	778c HD	728	718	597ci HD DI Combo	597ci HD Combo	596c HD DI	596c HD	587ci HD Combo	586c HD	581i Combo	570 DI	570	560
GPS Receiver	●	●	●	○	○	○	●	●	—	—	●	—	●	—	—	—
GPS Trackplotting	●	●	●	○	○	○	●	●	—	—	●	—	●	—	—	—
GPS Chartplotting	●	●	●	—	—	—	●	●	—	—	●	—	●	—	—	—
Waypoints, Routes, Tracks/Points	3,000, 50, 50/20,000	3,000, 50, 50/20,000	3,000, 50, 50/20,000	750, 0, 10/2,000	750, 0, 10/2,000	750, 0, 10/2,000	3,000, 50, 50/20,000	3,000, 50, 50/20,000	—	—	3,000, 50, 50/20,000	—	3,000, 50, 50/20,000	—	—	—
Humminbird ContourXD	●	●	●	—	—	—	—	—	—	—	—	—	—	—	—	—
Humminbird UniMap	—	—	—	—	—	—	●	●	—	—	●	—	●	—	—	—
LakeMaster	○	○	○	—	—	—	○	○	—	—	○	—	○	—	—	—
Navionics Gold/HotMaps	○	○	○	—	—	—	○	○	—	—	○	—	○	—	—	—
Navionics Platinum	—	—	—	—	—	—	—	—	—	—	—	—	—	—	—	—

Optional Add-Ons	798ci HD SI Combo	788ci HD DI Combo	788ci HD Combo	778c HD	728	718	597ci HD DI Combo	597ci HD Combo	596c HD DI	596c HD	587ci HD Combo	586c HD	581i Combo	570 DI	570	560
GPS Receiver	●	●	●	○	○	○	●	●	—	—	●	—	●	—	—	—
Ethernet Networking	○	○	○	○	—	—	—	—	—	—	—	—	—	—	—	—
WeatherSense	○	○	○	○	○	○	—	—	—	—	—	—	—	—	—	—
Wireless Sonar Link	○	○	○	○	○	○	—	—	—	—	—	—	—	—	—	—
CannonLink	○	○	○	○	○	○	—	—	—	—	—	—	—	—	—	—
InterLink	○	○	○	○	○	○	—	—	—	—	—	—	—	—	—	—
HumminbirdPC	○	○	○	○	○	○	—	—	—	—	—	—	—	—	—	—
AS WX 1 Weather Accessory	○	○	○	—	—	—	—	—	—	—	—	—	—	—	—	—
Upgradeable Internal Software	○	○	○	○	○	○	—	—	—	—	—	—	—	—	—	—

User Features:	798ci HD SI Combo	788ci HD DI Combo	788ci HD Combo	778c HD	728	718	597ci HD DI Combo	597ci HD Combo	596c HD DI	596c HD	587ci HD Combo	586c HD	581i Combo	570 DI	570	560
SwitchFire Sonar	●	●	●	●	●	●	●	●	●	●	●	●	●	●	●	●
Screen Snap Shot to Memory Card	●	●	●	—	—	—	—	—	—	—	—	—	—	—	—	—
Sonar Recording	●	●	●	—	—	—	—	—	—	—	—	—	—	—	—	—
Split Screen Zoom	●	●	●	●	●	●	●	●	●	●	●	●	●	●	●	●
Split Screen Bottom Lock	●	●	●	●	●	●	●	●	●	●	●	●	●	●	●	●
3D Chart View	●	●	●	—	—	—	●	●	—	—	●	—	●	—	—	—
Large Digits View	●	●	●	●	●	●	●	●	—	—	●	—	●	—	—	—
Wide/Narrow Cone Split Screen	●	●	●	●	●	●	●	●	●	●	●	●	●	●	●	●
Custom View Selections	●	●	●	●	●	●	●	●	●	●	●	●	●	●	●	●
Custom Digital Readout Selections	●	●	●	●	●	●	●	●	●	●	●	●	●	●	●	●
Selectable Display Colors	●	●	●	—	—	—	●	●	—	—	●	—	●	—	—	—
View Pre-Set Keys	●	●	●	●	●	●	—	—	—	—	—	—	—	—	—	—
Temperature Graph	—	—	—	—	—	—	—	—	—	—	—	—	—	—	—	—
Temperature Alarm	●	●	●	●	●	●	●	●	—	—	●	—	●	—	—	—
Freeze Frame	●	●	●	●	●	●	—	—	—	—	●	—	●	—	—	—
Instant Image Update	●	●	●	●	●	●	—	—	—	—	—	—	—	—	—	—
Mark Structure on Sonar	●	●	●	○	○	○	●	●	—	—	●	—	●	—	—	—
Selective Fish ID+	●	●	●	●	●	●	●	●	●	●	●	●	●	●	●	●
Real Time Sonar	●	●	●	●	●	●	●	●	●	●	●	●	●	●	●	●
Sonar Echo Enhancement	●	●	●	●	●	●	●	●	●	●	●	●	●	●	●	●
Triplog	●	●	●	○	○	○	●	●	○	○	●	○	●	○	○	○
X-Press Menu System	●	●	●	●	●	●	●	●	●	●	●	●	●	●	●	●

● Included ○ Optional *Quick Disconnect Optional In-Dash Mounting Kit will not support 700 Series™ models that have internal GPS. Features and specifications subject to change without notice

300 Series™

				
Model	385ci Combo	365i Combo	345c	325
Model Options	385ci Combo Portable, 385ci Combo Kayak	—	345c Portable	—
Display Size	3½" Diagonal	4" Diagonal	3½" Diagonal	4" Diagonal
Display Pixel Matrix	320V x 240H	320V x 240H	320V x 240H	320V x 240H
Display Type	Color TFT	FSTN LCD	Color TFT	FSTN LCD
Display Colors/Grayscale	256 Colors	16 Level Grayscale	256 Colors	16 Level Grayscale
Sonar - Standard	DualBeam PLUS	DualBeam PLUS	DualBeam PLUS	DualBeam PLUS
Sonar Coverage	20° & 60° @ -10db	20° & 60° @ -10db	20° & 60° @ -10db	20° & 60° @ -10db
Sonar Frequency	200/83 kHz	200/83 kHz	200/83 kHz	200/83 kHz
Sonar Optional	—	—	—	—
Target Separation	2 ½ Inches	2 ½ Inches	2 ½ Inches	2 ½ Inches
Power Output	300 Watts (RMS); 2400 Watts (Peak-to-Peak)	300 Watts (RMS); 2400 Watts (Peak-to-Peak)	300 Watts (RMS); 2400 Watts (Peak-to-Peak)	300 Watts (RMS); 2400 Watts (Peak-to-Peak)
Current Draw	380 mA	270 mA	380 mA	270 mA
Depth Capability	1000 ft	1000 ft	1000 ft	1000 ft
Temperature	Included	Included	Included	Included
Speed	GPS Speed Included	GPS Speed Included	Capable	Capable
Backlight	Yes	Yes	Yes	Yes
Waterproof	Yes	Yes	Yes	Yes
Unit Size - Gimbal Mount	5.25" W x 7.4" H x 4" D	5.25" W x 7.4" H x 4" D	5.25" W x 7.4" H x 4" D	5.25" W x 7.4" H x 4" D
Unit Size - In-Dash Mount	5.25" W x 5.12" H x 1.12" D	5.25" W x 5.12" H x 3.4" D	5.25" W x 5.12" H x 1.12" D	5.25" W x 5.12" H x 3.4" D
Mount	Quick Disconnect Optional In-dash	Quick Disconnect Optional In-dash	Quick Disconnect Optional In-dash	Quick Disconnect Optional In-dash
Transducer - Standard	XNT-9-20-T	XNT-9-20-T	XNT-9-20-T	XNT-9-20-T
Transducer Mounting - Standard	Transom	Transom	Transom	Transom
Power Input	10-20 VDC	10-20 VDC	10-20 VDC	10-20 VDC

GPS Features

GPS Receiver	●	●	—	—
GPS Trackplotting	●	●	—	—
GPS Chartplotting	●	●	—	—
Waypoints, Routes, Tracks/Points	3,000, 50, 50/20,000	3,000, 50, 50/20,000	—	—
Humminbird ContourXD	●	—	—	—
Humminbird UniMap	—	●	—	—
LakeMaster	○	—	—	—
Navionics Gold/HotMaps	○	○	—	—
Navionics Platinum	—	—	—	—

Optional Add-Ons

GPS Receiver	●	●	—	—
Ethernet Networking	—	—	—	—
WeatherSense	—	—	—	—
Wireless Sonar Link	—	—	—	—
CannonLink	—	—	—	—
InterLink	—	—	—	—
HumminbirdPC	—	—	—	—
AS WX 1 Weather Accessory	—	—	—	—
Upgradeable Internal Software	—	—	—	—

User Features:

SwitchFire Sonar	●	●	●	●
Screen Snap Shot to Memory Card	●	●	—	—
Sonar Recording	●	●	—	—
Split Screen Zoom	●	●	●	●
Split Screen Bottom Lock	●	●	—	—
3D Chart View	●	●	—	—
Large Digits View	●	●	●	●
Wide/Narrow Cone Split Screen	●	●	●	●
Custom View Selections	●	●	●	●
Custom Digital Readout Selections	●	●	●	●
Selectable Display Colors	●	—	●	—
View Pre-Set Keys	—	—	—	—
Temperature Graph	—	—	—	—
Temperature Alarm	●	●	●	●
Freeze Frame	●	●	●	●
Instant Image Update	●	●	●	●
Mark Structure on Sonar	●	●	—	—
Selective Fish ID+	●	●	●	●
Real Time Sonar	●	●	●	●
Sonar Echo Enhancement	●	●	●	●
Triplog	●	●	○	○
X-Press Menu System	●	●	●	●




● Included ○ Optional

PiranhaMAX™

						
Model	PiranhaMAX 190c	PiranhaMAX 180	PiranhaMAX 170	PiranhaMAX 160	PiranhaMAX 150	PiranhaMAX 230 PT
Model Options	—	—	—	160 Portable	150 Portable	—
Display Size	3.5" Diagonal	4" Diagonal	4" Diagonal	4" Diagonal	4" Diagonal	4" Diagonal
Display Pixel Matrix	320V x 240H	240V x 160H	240V x 160H	160V x 128H	160V x 128H	240V x 160H
Display Type	Color TFT	FSTN LCD	FSTN LCD	FSTN LCD	FSTN LCD	FSTN LCD
Display Colors/Grayscale	256 Colors	8 Level Grayscale	8 Level Grayscale	4 Level Grayscale	4 Level Grayscale	8 Level Grayscale
Sonar	Single Beam	TriBeam	Dual Beam	Dual Beam	Single Beam	Dual Beam & SmartCast
Sonar Coverage	20° @ -10db	20° & 35° (2) @ -10db 90° Total Coverage	20° & 60° @ -10db	20° & 60° @ -10db	20° @ -10db	DualBeam: 20° & 60° @ -10db SmartCast: 90° @ -10db
Sonar Frequency	200kHz	200/455 kHz	200/83 kHz	200/83 kHz	200kHz	DualBeam: 200/83 kHz SmartCast: 125kHz
Target Separation	2 ½ Inches	2 ½ Inches	2 ½ Inches	2 ½ Inches	2 ½ Inches	2 ½ Inches
Power Output	200 Watts (RMS); 1600 Watts (Peak-to-Peak)	200 Watts (RMS); 1600 Watts (Peak-to-Peak)	200 Watts (RMS); 1600 Watts (Peak-to-Peak)	100 Watts (RMS); 800 Watts (Peak-to-Peak)	100 Watts (RMS); 800 Watts (Peak-to-Peak)	100 Watts (RMS); 800 Watts (Peak-to-Peak)
Current Draw	220 mA	100 mA	100 mA	100 mA	100 mA	100 mA
Depth Capability	800 ft	800 ft	800 ft	600 ft	600 ft	Dual Beam: 600 ft SmartCast: 120 Ft
Temperature	Included	Included	Included	Included	Included	Included
Backlight	Yes	Yes	Yes	Yes	Yes	Yes
Waterproof	Yes	Yes	Yes	Yes	Yes	Yes
Unit Case Size	4¾" W x 6¼" H x 3¼" D	4¾" W x 6¼" H x 3¼" D	4¾" W x 6¼" H x 3¼" D	4¾" W x 6¼" H x 3¼" D	4¾" W x 6¼" H x 3¼" D	—
Mount*	Tilt and Swivel	Tilt and Swivel	Tilt and Swivel	Tilt	Tilt	Portable
Transducer - Standard	XNT-9-20-T	XNT-9-20-T	XNT-9-20-T	XNT-9-20-T	XNT-9-20-T	XPT-9-20-T
Transducer Mounting - Standard	Inside Hull or Transom	Inside Hull or Transom	Inside Hull or Transom	Inside Hull or Transom	Inside Hull or Transom	Suction Cup
Power Input	10-20 VDC	10-20 VDC	10-20 VDC	10-20 VDC	10-20 VDC	10-20 VDC
Wireless Range	—	—	—	—	—	SmartCast: 100 Ft

*In-Dash Mounting Kit for PiranhaMax™ does not support models manufactured before 2009.

Fishin' Buddy®

			
Model	140c Fishin' Buddy	120 Fishin' Buddy	110 Fishin' Buddy
Display Size	3 ½ Diagonal	4" Diagonal	4" Diagonal
Display Pixel Matrix	320V x 240H	240V x 160H	160V x 128H
Display Type	TFT LCD	FSTN LCD	FSTN LCD
Display Colors/Grayscale	256 Colors	8 Level Grayscale	4 Level Grayscale
Sonar	SideFinding Down/Side	SideFinding Down/Side	Single Beam Down
Sonar Coverage	34° & 10° @ -10db	34° & 10° @ -10db	34° @ -10db
Sonar Frequency	200/455 kHz	200/455 kHz	200kHz
Target Separation	2 ½ Inches	2 ½ Inches	2 ½ Inches
Power Output	125 watts (RMS); 1000 Watts (Peak-to-Peak)	125 watts (RMS); 1000 Watts (Peak-to-Peak)	125 watts (RMS); 1000 Watts (Peak-to-Peak)
Current Draw	125mA	110mA	110mA
Depth Capability	240 ft Down & 120 ft Side	240 ft Down & 120 ft Side	240 ft Down
Temperature	Included	Included	Included
Backlight	Yes	Yes	Yes
Waterproof	Yes	Yes	Yes
Unit Case Size	4.22" W x 5.76" H x 2.72" D	4.22" W x 5.76" H x 2.72" D	4.22" W x 5.76" H x 2.72" D
Mount	Portable Clamp	Portable Clamp	Portable Clamp
Transducer - Standard	—	—	—
Transducer Mounting - Standard	24"-40" Telescopic Pole	24" Fixed Pole	24" Fixed Pole
Power Input	6 AA	6 AA	6 AA

SmartCast®/HDR

					
Model	RF45	RF35	RF25	RF15	HDR 650
Display Size	—	1¼" Diagonal	1¼" Diagonal	3¼" Diagonal	1¼" Diagonal
Display Pixel Matrix	—	48V x 32H	48V x 32H	160V x 132H	—
Display Type	—	STN LCD	STN LCD	FSTN LCD	LCD
Display Colors/Grayscale	—	—	—	4 Level Grayscale	—
Sonar	Single Beam	Single Beam	Single Beam	Single Beam	Single Beam
Sonar Coverage	90° @ -10db	90° @ -10db	90° @ -10db	90° @ -10db	20° @ -10db
Sonar Frequency	125kHz	125kHz	125kHz	125kHz	200kHz
Depth Capability	120 ft	120 ft	120 ft	120 ft	600 ft
Temperature	—	Included	Included	Included	—
Backlight	—	Yes	Yes	Yes	Yes
Waterproof	—	Yes	Yes	Yes	Yes

Features and specifications subject to change without notice

ICE Flashers



Model	ICE 55	ICE 45	ICE 35	ICE 385ci Combo*	ICE 345c**
Model Options	ICE 55/385ci Combo	—	—	ICE 55/385ci Combo	—
Display	526 segment, 6-color fiber optic LCD center	526 segment, 3-color fiber optic LCD center	526 segment, 3-color fiber optic	320V x 240H, 3.5" Diagonal, 256 Color TFT	320V x 240H, 3.5" Diagonal, 256 Color TFT
Portable Bag Size	9.25" W x 11.25" H x 10" D	—	—	8.75" W x 10.25" H x 9.75" D	8.75" W x 10.25" H x 9.75" D
Power Output	300 Watts RMS; 2400 Watts Peak to Peak	225 Watts RMS; 1800 Watts Peak to Peak	100 Watts RMS; 800 Watts Peak to Peak	300 Watts RMS; 2400 Watts Peak to Peak	300 Watts RMS; 2400 Watts Peak to Peak
Current Draw	250 mA	250 mA	210 mA	380 mA	380 mA
Depth Capability	200 feet	200 feet	200 feet	1000 feet	1000 feet
Target Separation	½ inch	½ inch	½ inch	2 ½ inches	2 ½ inches
Transducer - Standard	XI 9 19	XI 9 19	XI 9 19	XI 9 20	XI 9 20
Transducer Coverage	240 kHz 19° @ -3db 455 kHz 9° @ -3 db	240 kHz 19° @ -3db 455 kHz 9° @ -3 db	240 kHz 19° @ -3db 455 kHz 9° @ -3 db	200 kHz 20° @ -3db 83 kHz 60° @ -3 db	200 kHz 20° @ -3db 83 kHz 60° @ -3 db
Transducer Cable Length	8 ft	8 ft	8 ft	8 ft	8 ft
Operating Frequency	240/455 kHz	240/455 kHz	240/455 kHz	200/83 kHz	200/83 kHz
Zoom	2x – Can adjust to see any part of water column	2x – Can adjust to see any part of water column	2x – Can adjust to see any part of water column	2x – Can adjust to see any part of water column	2x – Can adjust to see any part of water column
Noise Rejection	10 steps	10 steps	10 steps	Off, Low, Medium, High 1, High 2, High 3	Off, Low, Medium, High 1, High 2, High 3
Gain	50 steps	50 steps	50 steps	Sensitivity - 20 levels	Sensitivity - 20 levels
Color Palettes	3 Color (Red, Orange, Green) 3 Color (Red, Green, Yellow) 6 Color (Red, Orange, Yellow, Light Green, Green, Blue)	3 Color (Red, Orange, Green)	3 Color (Red, Orange, Green)	3 Color (Red, Orange, Green) 3 Color (Red, Green, Yellow) 6 Color (Red, Orange, Yellow, Light Green, Green, Blue)	3 Color (Red, Orange, Green) 3 Color (Red, Green, Yellow) 6 Color (Red, Orange, Yellow, Light Green, Green, Blue)
Depth Ranges	20, 40, 80, 200 (ft)	20, 40, 80, 200 (ft)	20, 40, 80, 200 (ft)	Auto	Auto
Power Input	10-20 VDC	10-20 VDC	10-20 VDC	10.5-20 VDC	10.5-20 VDC
Battery Included	12V 9 amp hours	12V 7 amp hours	12V 7 amp hours	12V 9 amp hours	12V 9 amp hours
Battery Status Indicator	Digital % on LCD	Digital % on LCD	26 segments full to empty	6 segments full to empty	6 segments full to empty
Temperature	—	—	—	—	—

GPS Features	ICE 55	ICE 45	ICE 35	ICE 385ci Combo*	ICE 345c**
GPS Receiver	—	—	—	●	—
GPS Trackplotting	—	—	—	●	—
GPS Chartplotting	—	—	—	●	—
Waypoints, Routes, Tracks/Points	—	—	—	3,000, 50, 50/20,000	—
Humminbird ContourXD	—	—	—	—	—
Humminbird UniMap	—	—	—	●	—
LakeMaster	—	—	—	○	—
Navionics Gold/HotMaps	—	—	—	○	—
Navionics Platinum	—	—	—	—	—

*All 385ci Combo optional add ons and user features apply to ICE 385ci Combo. See page 48 for a full list.
 **All 345c optional add ons and user features apply to ICE 345c. See page 48 for a full list.
 ● Included ○ Optional

Features and specifications subject to change without notice

In addition to a full range of Humminbird® transducers, you now have the flexibility to link your Humminbird® fishfinder with an Airmar® saltwater transducer.

Your deepwater options just got a whole lot deeper.

Ready for whatever you or Mother Nature throws at them, these durable transducers are only available through your Humminbird dealer. Talk to your dealer for help finding the ideal Airmar model for your boat and application. Or, consult the chart below for the rugged and reliable Humminbird transducer that best meets your needs.

Step 1: Find your model and group number

Group 1	Group 2	Group 3	Group 4	Group 5	Group 6	Group 7	Group 8	Group 9
1157c 957c, 937c, 931c, 917c, 858c 788c, 787c, 778c, 777c, 768c, 767, 757c, 747c, 728, 727, 718, 717 500 Series Models 300 Series Models PiranhaMAX® 190c, 170, 160, 150, 230PT	937c DF2 937c DF 931c DF OPTIONAL: 1157c, 958c, 917c, 957c, 858c	967c 3D 947c 3D Matrix 47 3D	737 Matrix 37 Matrix 35 PiranhaMAX 180* OPTIONAL: 1197c SI, 1157c, 998c SI, 997c SI, 958c, 957c, 917c, 898c SI, 858c, 788c, 787c, 778c, 777c, 768, 767, 737, 727, Matrix 97, 87c, 67	798c SI 797c SI	100SX 128 Wide One Hundred	1197c SI 998c SI 997c SI 898c SI	788ci HD DI Combo, 597ci HD DI Combo, 596c HD DI, 570 DI	ICE 55 ICE 45 ICE 35

*Not speed capable. **Not speed and temp capable. "T" designation indicates temperature included in transducer. note: Transducers will vary based on model. Transducers pictured are representative of type.

Step 2: Select a transducer type available for your group number

GROUP	Transom Transducer	Trolling Motor Transducer	Puck (Shoot Thru-Hull) Transducer	Portable Transducer	Bronze Thru-Hull Transducer	Plastic Thru-Hull Transducer	Stick-On Transducer	Bronze 3 in 1 Transducer	Ice Transducer
	Mount on the transom (back of the boat) Available on many models, the impact release feature pivots transducer out of the way if struck by an object.	Mount on most trolling motors. Low-profile shape reduces drag and hang-ups on weeds.	Mount to inside of most single-layer fiberglass hulls using slow-cure epoxy. (Cored fiberglass, metal or wood hulls not acceptable. Hull must be free of trapped air and voids.)	Mount on transom or side of most smooth-surface wood, aluminum or fiberglass boats. Heavy-duty suction cup holds transducer at trolling speeds only.	Ideal for large boats and boats with in-board motors. Not recommended for trailered boats. Professional installation recommended.	Economic alternative to bronze transducer. Mounts on thinner hulls such as aluminum. Internal steel sleeve provides extra reinforcement. Not recommended for trailered boats. Professional installation recommended.	Mount on the hull bottom using Very High Bond (VHB) tape for easy installation and improved high-speed readings versus transom mounting.	Combines sonar, temperature and speed sensor into one unit. Not for trailered boats. Professional installation recommended.	This DualBeam transducer can be used as replacement or to convert any portable unit into an ice-ready fishfinder.
	20 ft cable and hardware included	15 ft cable and hardware included	15 ft cable and epoxy included	15 ft cable and hardware included	30 ft cable and hardware included	30 ft cable and hardware included	20 ft cable and VHB tape included	30 ft cable and hardware included	8 ft cable included
1	XNT-9-20-T XNT-9-20	XTM-9-20-T XTM-9-20	XP-9-20	XPT-9-20-T	XTH-9-20	XFM-9-20 XTH-9-20-P	XSO-9-20-T	XTD-9-QB-90	XI-9-20
2	—	—	—	—	XTH-9-DB-35-KW-T	—	—	—	—
3	SHS-7W	Use AD-STM7 Adapter	—	—	STH-7W	—	—	—	—
4	XNT-9-QB-90-T XNT-9-QB-90	XTM-9-QB-90-T	XP-9-QB-90-T	XPT-9-QB-90-T	XBTH-9-QB-90-T	XPTH-9-QB-90-T	—	XTD-9-QB-90	XI-9-20
5	XNT-9-SI-180-T	XTM-9-SI-180-T	—	—	—	XPTH-9-HDSI-180-T	—	—	—
6	XHS-6-24	XTM-9-20-T AD-926	XP-9-20 & AD-926	XPT-9-20-T & AD-926	—	—	—	—	—
7	XHS-9-HDSI-180-T	XTM-9-HDSI-180-T	—	—	—	XPTH-9-HDSI-180-T	—	—	—
8	XNT-9-DI-T	XNT-9-DI-T*	XP-9-DI-T	—	—	—	—	—	—
9	—	—	—	—	—	—	—	—	XI-9-19

*Optional Humminbird adapter required (part number 7400871).





Cables	Power Cable	Transducer Extension Cable	Ethernet Cable	Transducer Adaptor Cable AD-629	Transducer Adaptor Cable AD-926	Transducer Adaptor Cable AS SI LR Y	Transducer Adaptor Cable AS SI DB Y	Speed/Temp. Adaptor Cable AS SW Y	Ethernet Adaptor Cable AS QDE
Description	Features plug on one end and soldered bare leads on opposite. Length can be extended with 18awg multi-strand wire. Connect power to a fuse panel, or through inline fuse holder (not included) if hooked directly to the battery.	Add extra length to standard transducer cable. Available in a variety of lengths, cable plugs into existing transducer and your fishfinder.	Quickly setup an ethernet connection between two Humminbird ethernet capable units. Available in four lengths.	Lets many previously installed transducers work with new Humminbird models, greatly simplifying the upgrade process to a new model.	Enables many current transducers to function with older model fishfinders that no longer have replacement transducers available.	Splits Side Imaging source signal into left and right output for two Side Imaging transducers. A second Side Imaging transducer will need to be purchased.	Continuously splits the Side Imaging Signal and the Dual Beam Signal. This allows a separate Dual Beam transducer to be installed in another location without using a switch.	Allows Speed Wheel (TS W) use with all 700 HD Series units.	Allows ethernet connection to all 700 HD Series units.
Series: 1100, 900, 800, 700, 500, 300, Matrix, PiranhaMax	6 ft PC-10	10 ft: EC-W-10 30 ft: EC-W-30	—	Application 1 Adapts transducer model XT-6-20 (NS25, 200DX) to work with PiranhaMAX 15, 20, Fishfinder 565, Matrix 17, 27, 67, 77, 97, 87 for full Dual Beam capabilities.	Older 2 pin transducer models XT-6-20 and XHS-6-24 can be replaced with new 7 pin XNT-9-20.	797c SI, 798c SI, 898c SI, 997c SI, and 1197c SI Side Imaging transducers	797c SI, 798c SI, 898c SI, 997c SI, and 1197c SI Side Imaging transducers	All 700 Series HD Models: 798ci HD SI Combo, 788ci HD Combo, and 778c HD, 798ci HD DI	All 700 Series HD Models: 798ci HD SI Combo, 788ci HD Combo, and 778c HD, 798ci HD DI
898c SI, 997c SI, 998c SI, 1197c SI	6 ft PC-11	10 ft: EC-W-10 30 ft: EC-W-30	—						
3D Models: 967c 3D, 947c 3D, Matrix 47 3D	6 ft PC-10	10 ft: EC-W-10 30 ft: EC-W-30	—						
Wide One Hundred, 128, 100SX	6 ft PC-10	10 ft: EC-6 20 ft: EC-6-20	—	Application 2 Adapts transducer model XT-6-DB-74 (Wide 2000, Legend 1000Deep, 2000Deep, 3000Deep) to work with 931cDF and 937cDF for full Dual Beam capabilities.	Older 2 pin transducer models XT-6-DB-74 can be replaced with new 7 pin XT-9-DB-74-T.	—	—	—	—
All Ethernet Capable Models	—	—	2 ft: AS EC 2E 10 ft: AS EC 10E 20 ft: AS EC 20E 30 ft: AS EC 30E						

Mounts & Covers	Portable Case Conversion Kit	In-Dash Mounting Kit	RAM Windshield	RAM ATV	Mount Systems	Mount Cover	Unit Cover
Description	Portable conversion kits provide a rugged protective case with internal battery compartment and all the hardware needed to convert your Humminbird® for portabe use.	In-dash mounting kits let you panel mount your Humminbird® for a fully integrated appearance. Made of the same rugged materials as the unit and includes all mounting hardware.	Easily attach your fishfinder to your truck windshield for navigation purposes using this Quick Disconnect mount.	Navigate to the perfect fishing hole with this Quick Disconnect mount that easily attaches to your ATV handlebar.	Use for a second mounting location on your boat or as a great replacement for a worn original.	Convenient quick disconnect mounting system cover helps protect the connectors from rain and dirt accumulation when your Humminbird® is not installed.	Tough stretch neoprene cover protects your Humminbird during transport and storage.
1100 Series	—	IDMK-1100	—	—	GM-3 (Mount) MKH-3 (Knob Set)	—	UC-6 (hard plastic cover)*
900, 800 Series	—	IDMK-900	—	—	GM-2 (Mount) MKH-2 (Knob Set)	—	UC-5 (hard plastic cover)*
700, 500 Series	PTC-U	IDMK-700	RM Auto	RM ICE/ATV	MS-M	MC-W	UC-3 (hard plastic cover)*
All Matrix (except 97)	PTC-U	IDMK-M	—	—	MS-M	MC-W	UC-M
Matrix 97	—	—	—	—	GM-1 (Mount) MKH-L (Knob Set)	—	—
300 Series	PTC-U	IDMK-300	RM Auto	RM ICE/ATV	MS-M	MC-W	UC-4 (hard plastic cover)
Piranha, PiranhaMAX	PTC-P	IDMK PM	—	—	MS-PS (Swivel Mount) MKH-P (Knob)	—	UC 7
All Wide, 100SX, 200DX, 300TX, 400TX	PTC-U	—	—	—	—	MC-W	UC-WL (large)

* Hard plastic Unit Cover comes standard on models 798 and higher.

Switches & Sensors	Fishfinder Switch	Transducer Switch	Speed Sensor	Speed/Temperature Sensor	Temperature Sensor
Description	Connect two fishfinders to one transducer. Ideal for directing output from one transducer to a bow station or a second helm.	Connect two transducers to one fishfinder. Ideal for switching between the standard transducer and accessory transducer such as WideSide®.	Provides digital readings of speed through water. Activates the triplog feature that shows time, distance and average speed. Readings are from 2 to 70 mph. 20 ft cable and hardware included.	Combines two of the most popular accessory inputs into one compact transom mount unit. Monitors temperature from 25°F to 99°F and speed from 2 to 70 mph. 20 ft cable and hardware included.	Accurately monitor temperature of water surface or live well. 20 ft cable and hardware included.
Series: 1100, 900, 800, 700, 500, 300, Matrix, PiranhaMax	US2-W	TS2-W	SW*	TS-W	TG-W
3D Models (967c 3D, 947c 3D, Matrix 47 3D)	—	—	SW	TS-W	TG-W

*Not compatible with Wide Optic, Portrait, Panorama, Paramount, 3D Paramount, 300TX and 400TX

System Modules	CannonLink™	InterLink™	WeatherSense®	XM® NavWeather™	50 Channel GPS Receiver
1100, 900, 800, 700 & Matrix Series	Downrigger controller AS CANNONLINK MS-M	Network connection AS INTERLINK PTC-U	Barometric pressure monitor AS-BP	U.S. Inland Satellite weather receiver AS WX 1	50 Channel GPS/WAAS Satellite Receiver AS GR50
	Wireless Sonar Link™	PC Connection Kit	SystemLink	Memory Card Reader	USB Adapter
	SmartCast wireless receiver and RSS AS RSL	Serial connection cable AS PC2	Connects (2) units to (1) GPS receiver AS SYSLINK	MMC/SD Memory Card Reader for PC AS CR	Serial to USB adapter for PC Connection Kit AS USB

Note: Accessories will vary based on model. Accessories pictured are representative of type.